

The New Watergate and Kennedy Center River Front Park

A new Watergate and Kennedy Center Park River Front Park could be opened up by an easy change in the traffic configuration so that Rock Creek Parkway is connected with the lightly used below grade Highway 66 network. This modest road work would eliminate pollution generating traffic congestion in Foggy Bottom, the need to employ police to change the traffic patterns on Rock Creek Parkway during commute hours and would speed up traffic flowing between the NW, the SE and Virginia. This change would improve the ingress and egress to the Kennedy Center by cars and by pedestrians while opening up acres of waterfront land for revenue generating concessions. The New Watergate and Kennedy Center River Front Park would remove a dirty, loud river front highway and would create beautiful peaceful river front park. This park will provide a critical pedestrian link between the Mall, Foggy Bottom, the Kennedy Center and George Town. Bringing more people to all these neighborhoods will create more prosperity for all businesses and more tax revenue for the City.



Watergate West

The current road configuration is plagued by the light at Virginia Avenue and Rock Creek Parkway that causes long back-ups on both the Rock Creek and Potomac Parkways through Rock Creek Park and along the water-front. This congestion causes unnecessary air pollution, noise and cuts off Georgetown from the rest of the City. In addition, There is unnecessary congestion at the intersection of Hwy 66 and the Potomac Parkway at Ohio Drive.

The solution is to eliminate Potomac Parkway and turn the land into a River Front Park



The new traffic pattern will take advantage of the lightly used Hwy 66 to move cars below ground better, faster, with less impact on the neighborhood opening-up a New River Front Park where with a second boat house and room for restaurants. The increased tax revenue from business rent and prosperity would quickly pay for the road work



1949 2020

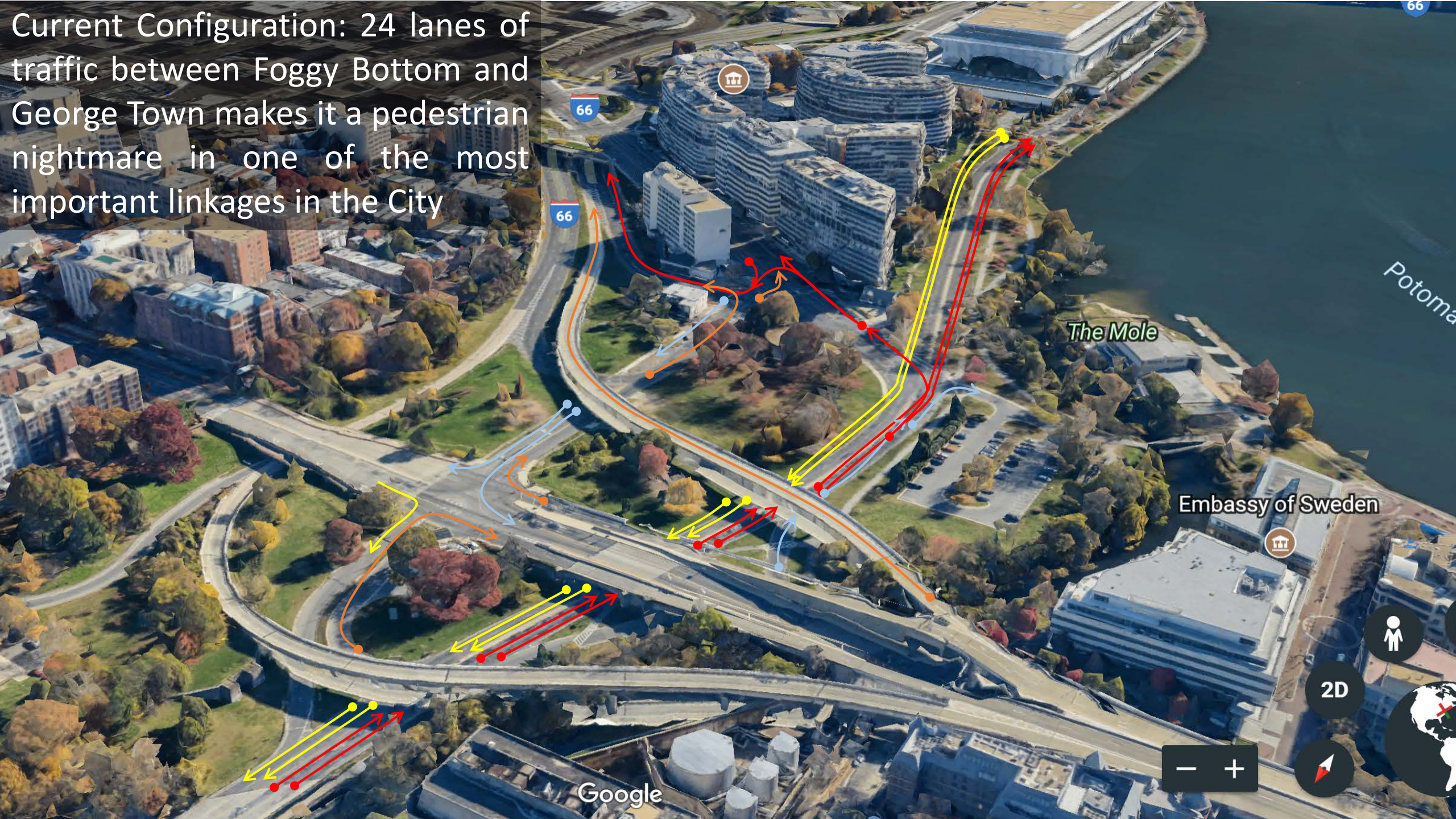
Watergate West

New boat house

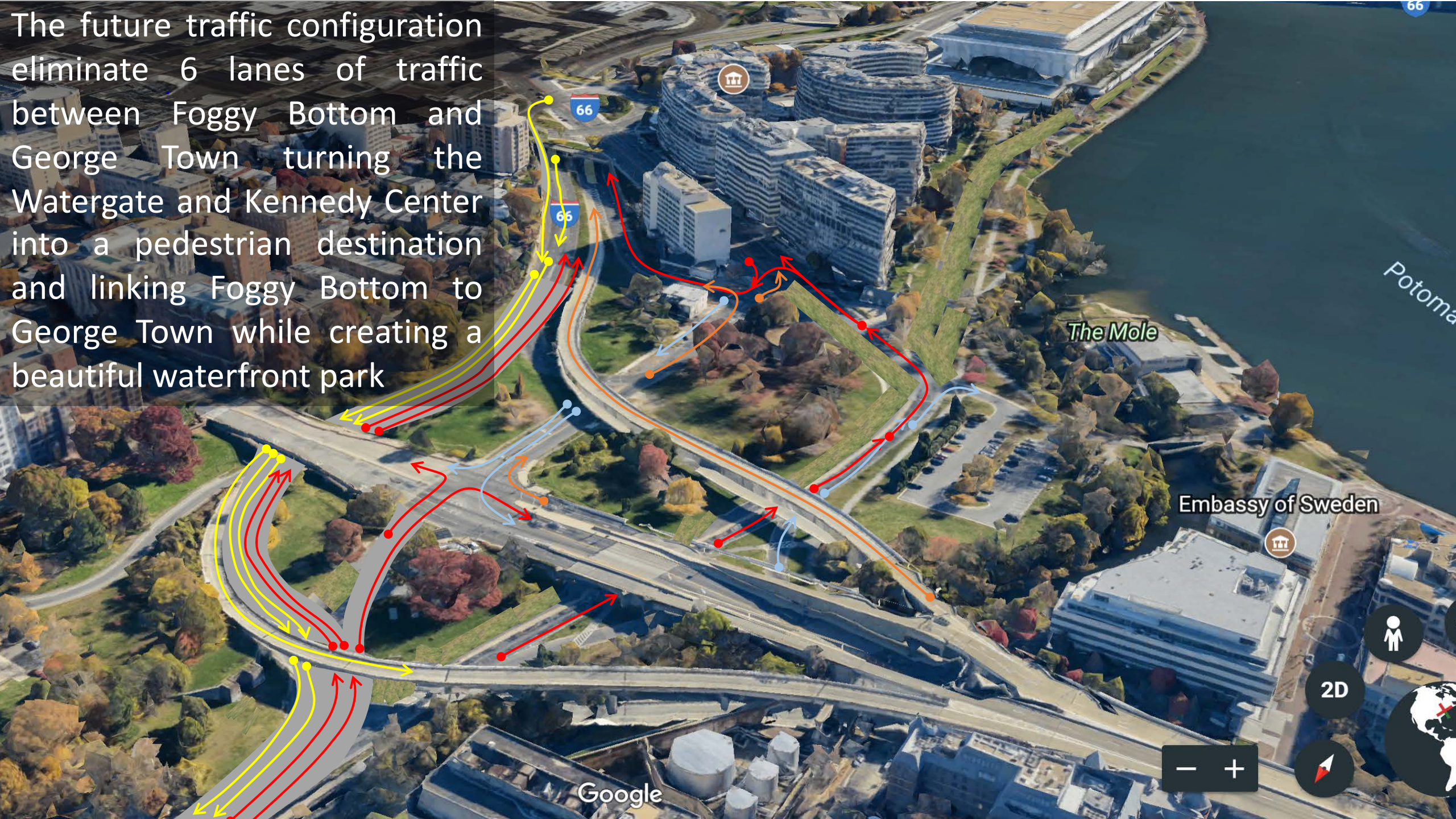
New restaurants

New River Front Park

Current Configuration: 24 lanes of traffic between Foggy Bottom and George Town makes it a pedestrian nightmare in one of the most important linkages in the City



The future traffic configuration eliminate 6 lanes of traffic between Foggy Bottom and George Town turning the Watergate and Kennedy Center into a pedestrian destination and linking Foggy Bottom to George Town while creating a beautiful waterfront park



Georgetown Water-Front

Current Configuration: Rock Creek and the Potomac Parkways cut the neighborhood in half with congestion and pollution

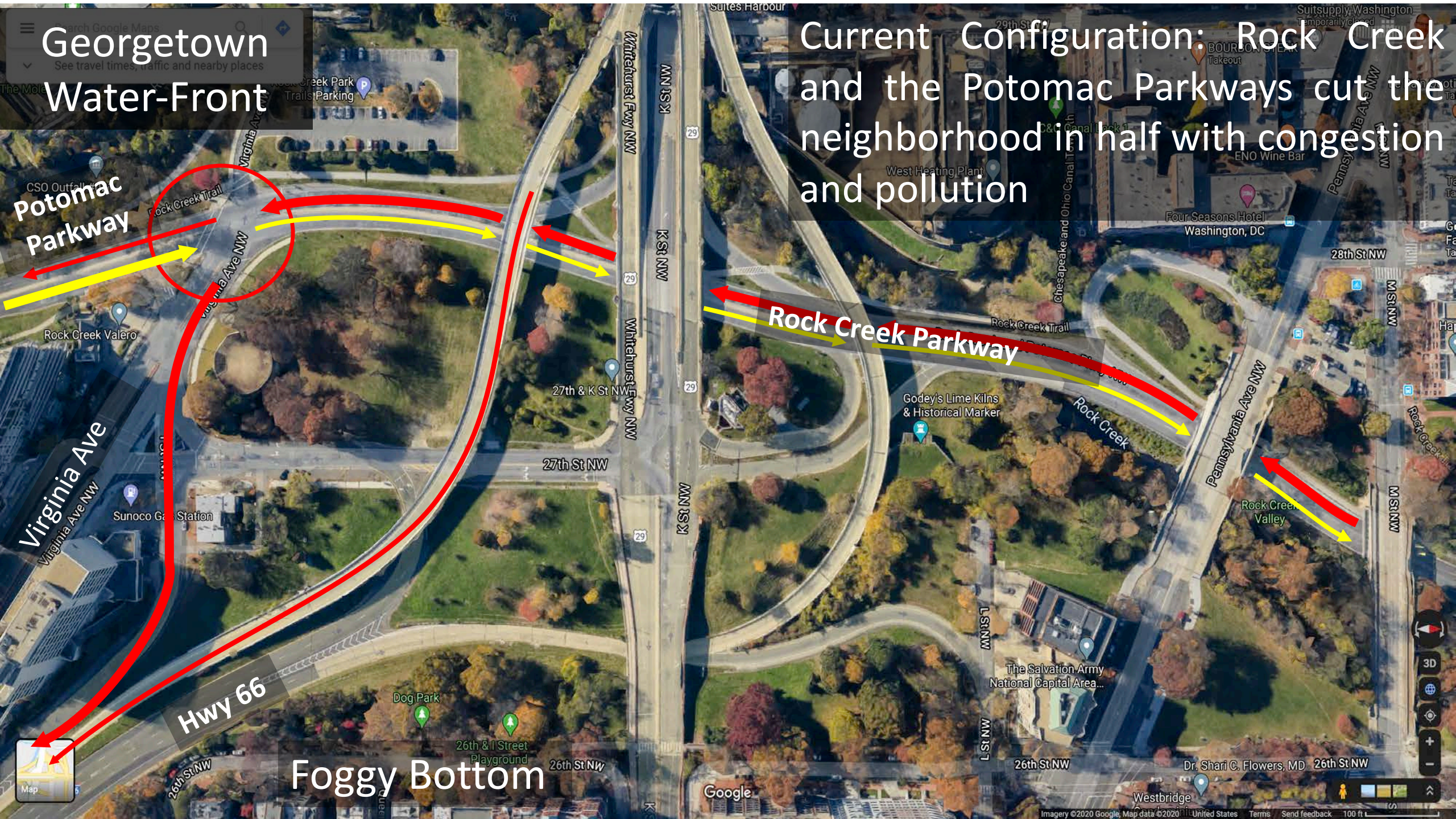
Potomac Parkway

Rock Creek Parkway

Virginia Ave

Hwy 66

Foggy Bottom



Georgetown Water-Front

Potomac Parkway becomes a park

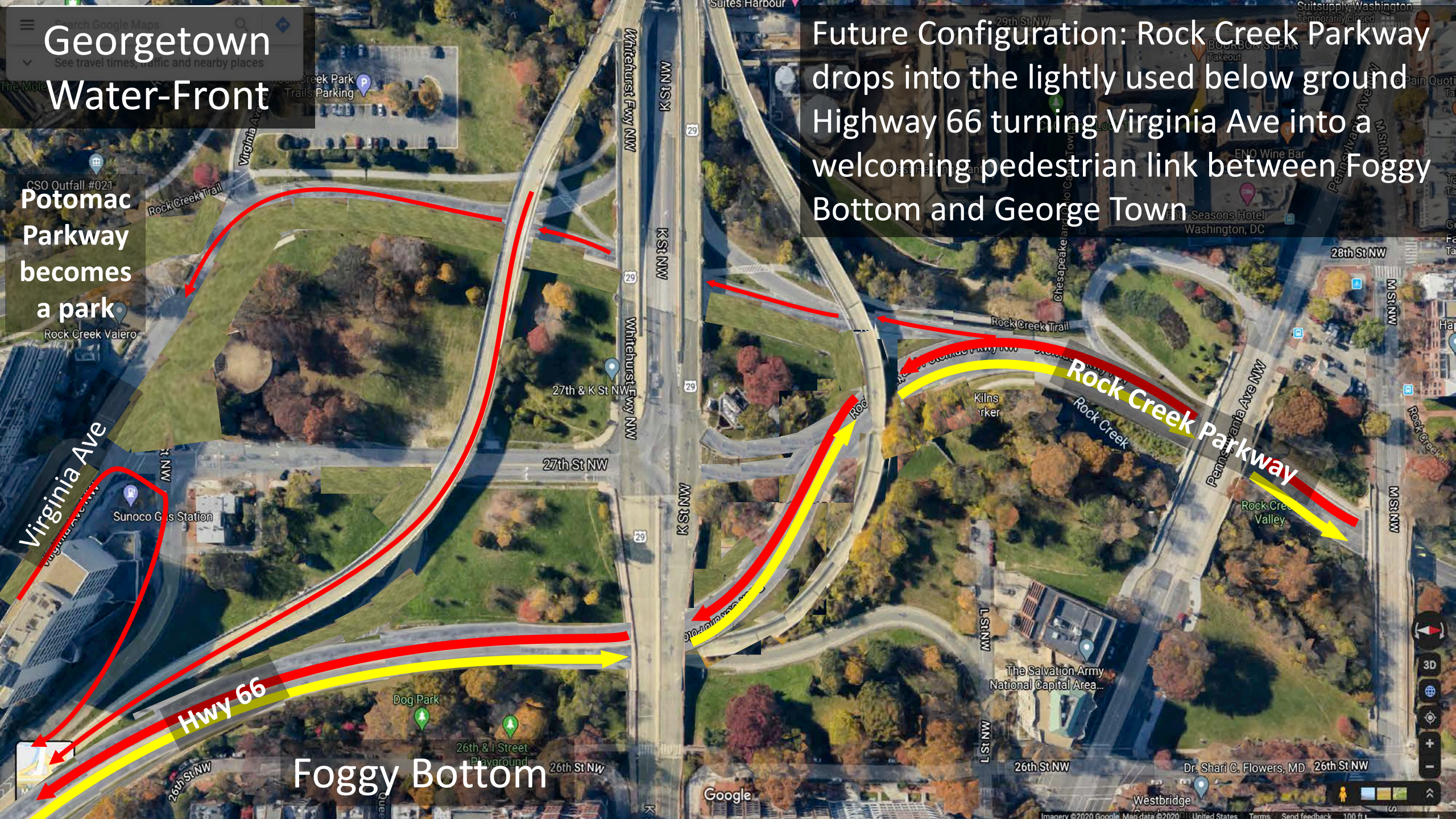
Virginia Ave

Hwy 66

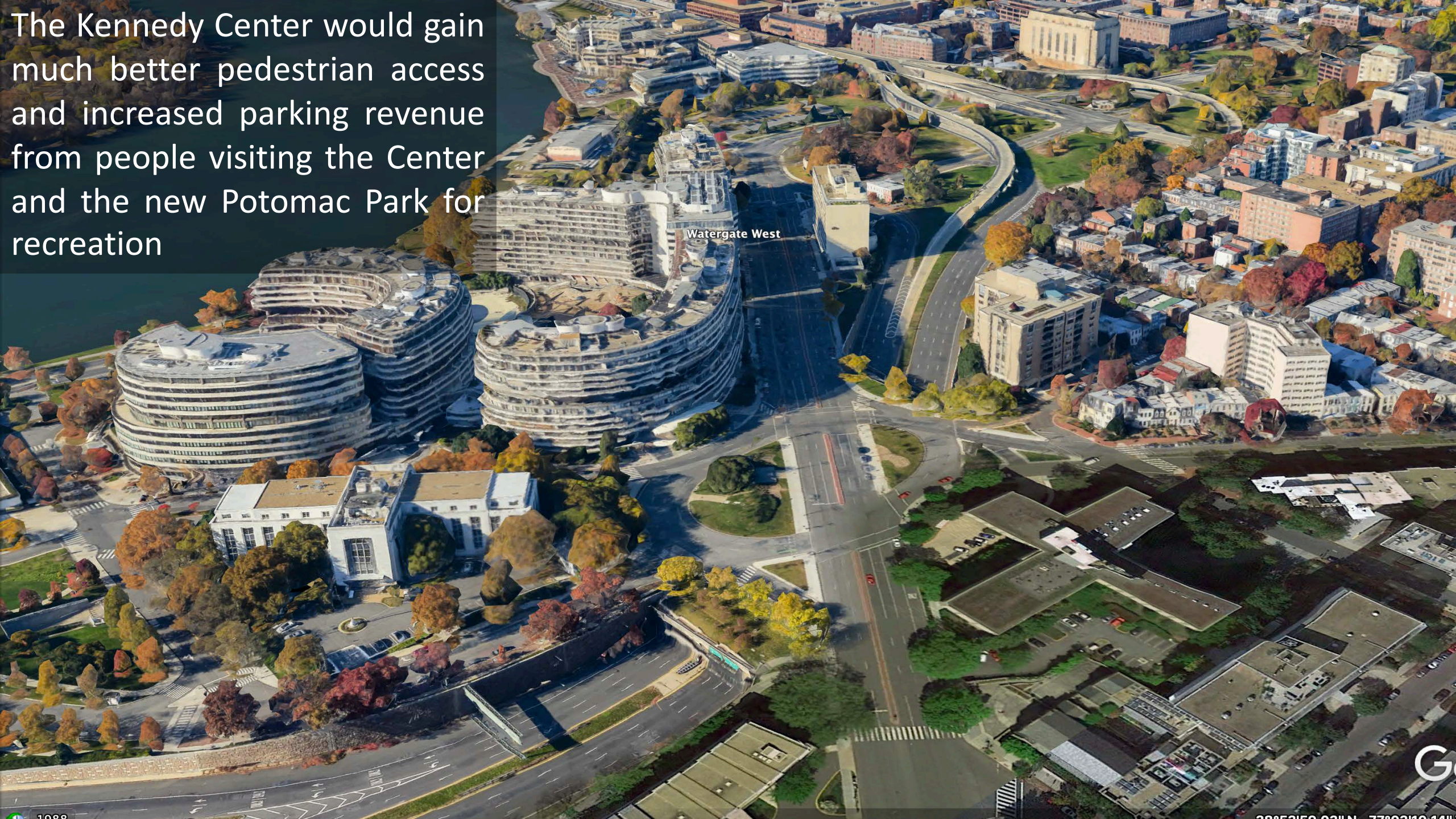
Foggy Bottom

Future Configuration: Rock Creek Parkway drops into the lightly used below ground Highway 66 turning Virginia Ave into a welcoming pedestrian link between Foggy Bottom and George Town

Rock Creek Parkway



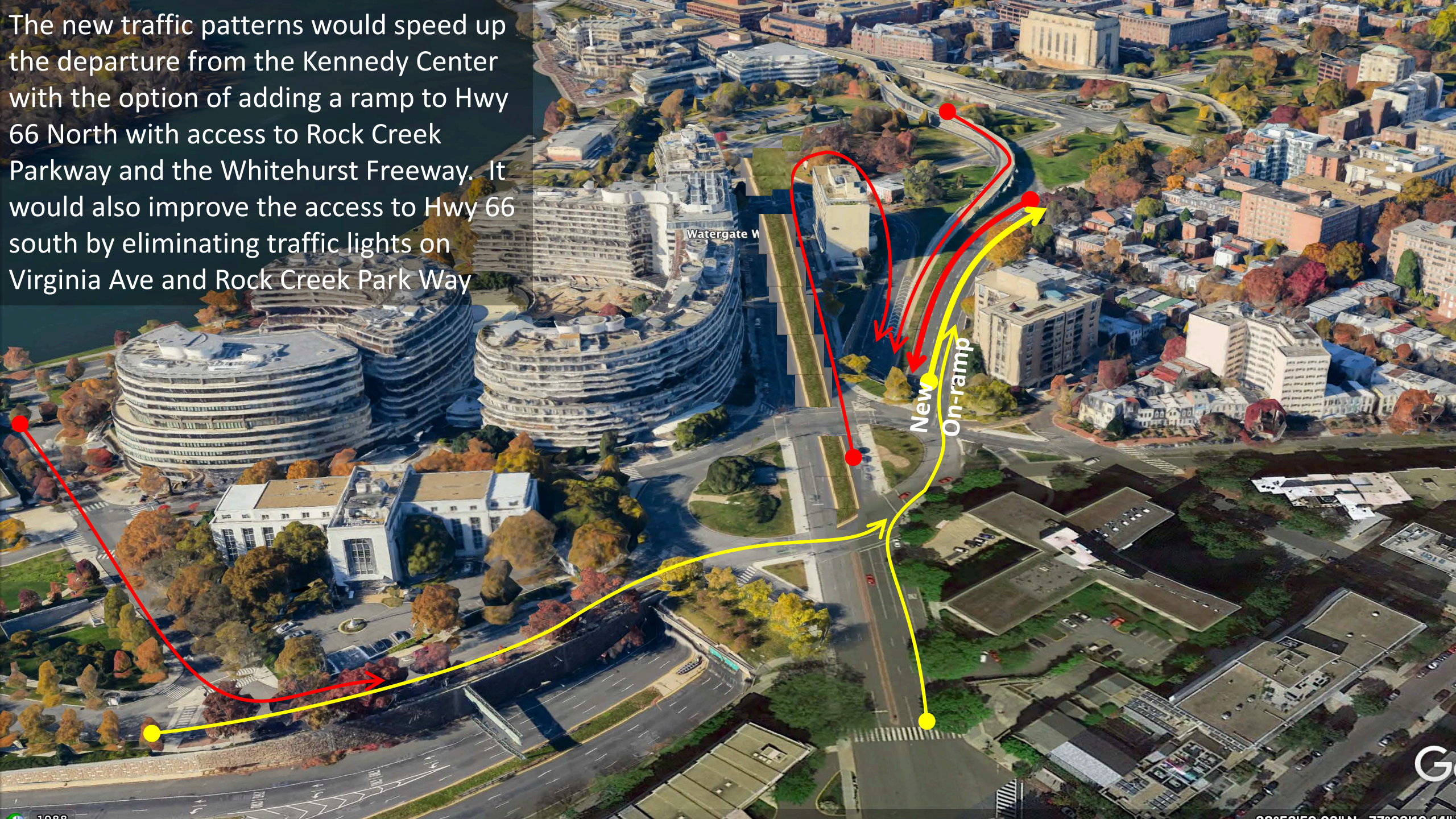
The Kennedy Center would gain much better pedestrian access and increased parking revenue from people visiting the Center and the new Potomac Park for recreation



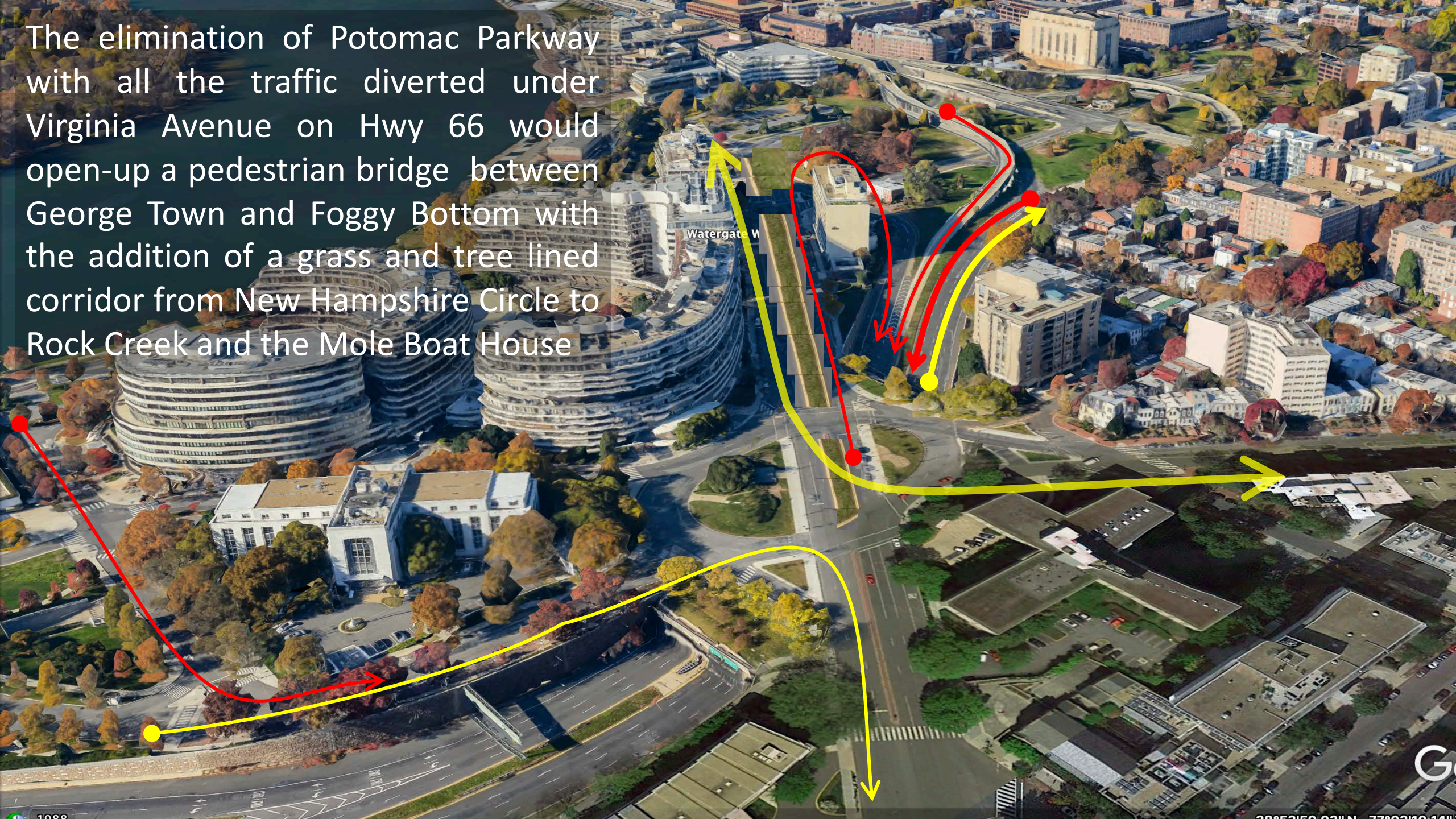
Watergate West



The new traffic patterns would speed up the departure from the Kennedy Center with the option of adding a ramp to Hwy 66 North with access to Rock Creek Parkway and the Whitehurst Freeway. It would also improve the access to Hwy 66 south by eliminating traffic lights on Virginia Ave and Rock Creek Park Way



The elimination of Potomac Parkway with all the traffic diverted under Virginia Avenue on Hwy 66 would open-up a pedestrian bridge between George Town and Foggy Bottom with the addition of a grass and tree lined corridor from New Hampshire Circle to Rock Creek and the Mole Boat House



The new traffic patterns would speed up the departure from the Kennedy Center even without adding a ramp to Hwy 66 North. There is easy access to Rock Creek Parkway North and the Whitehurst Freeway by going around the block

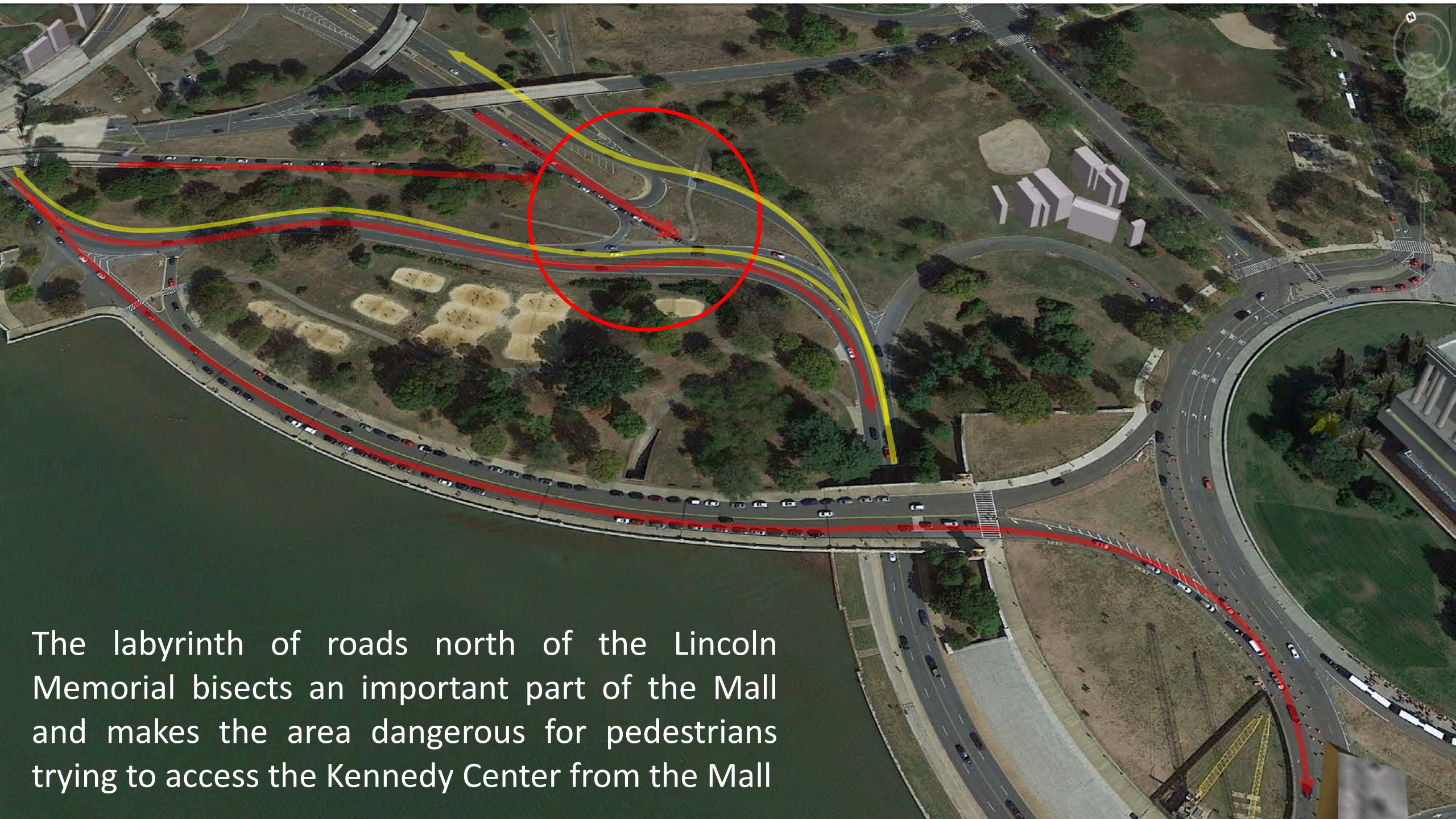


© 2020 Google

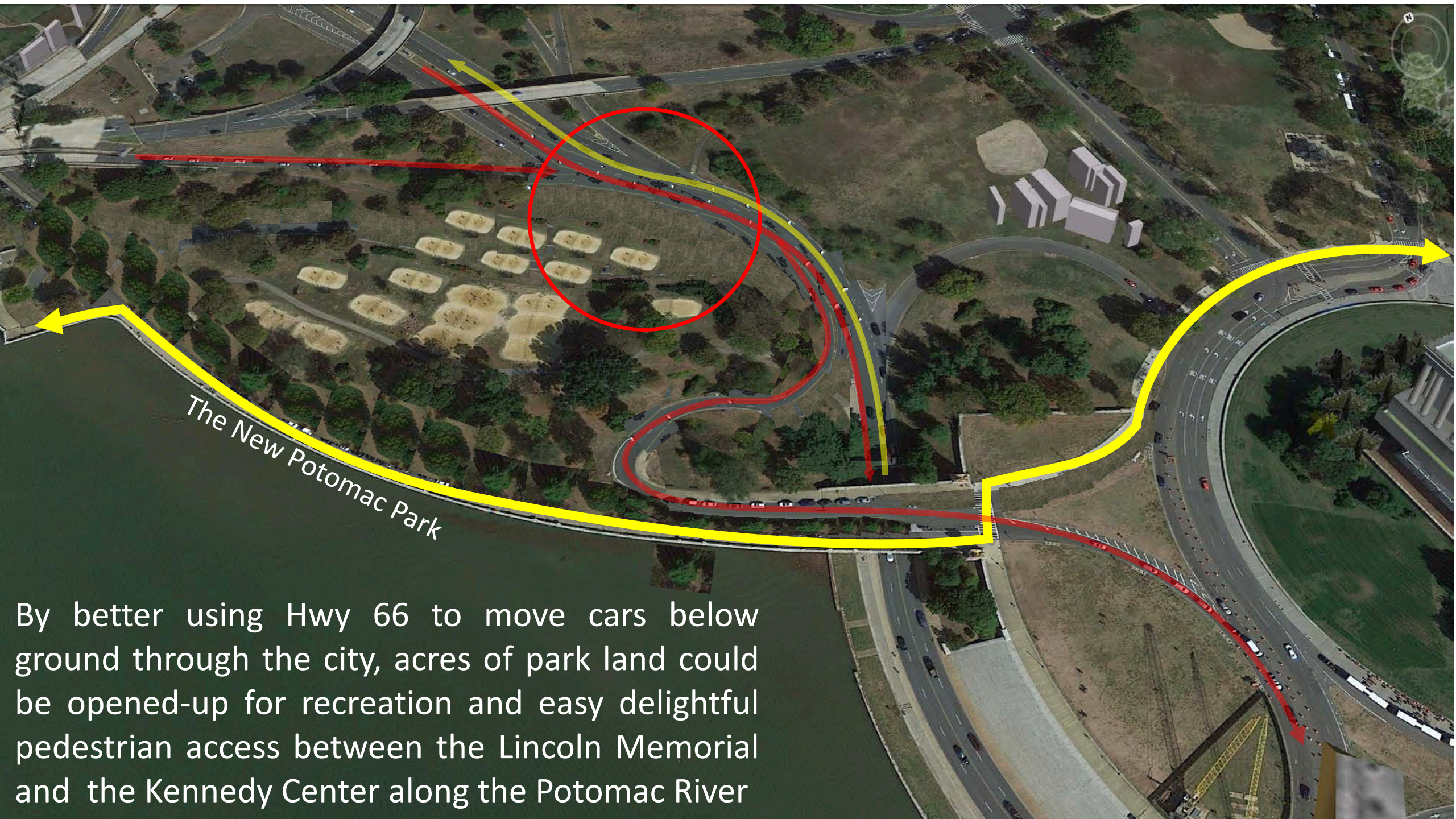
Google Earth

1949

Imagery Date: 6/11/2020 38°53'47.40" N 77°03'07.85" W elev 52ft eye alt 1486ft



The labyrinth of roads north of the Lincoln Memorial bisects an important part of the Mall and makes the area dangerous for pedestrians trying to access the Kennedy Center from the Mall



The New Potomac Park

By better using Hwy 66 to move cars below ground through the city, acres of park land could be opened-up for recreation and easy delightful pedestrian access between the Lincoln Memorial and the Kennedy Center along the Potomac River

The New River Front park will link the Mall and Foggy Bottom to George Town while reclaiming acres of land for recreation, restaurants and concessions. The cost to do the relatively modest traffic changes could easily be paid back by the increased tax revenue that the City would receive from this prosperity creating project



New River Front Park

Watergate West

New boat house

New restaurants

More Volley ball Courts

The background features decorative curved lines in shades of blue and green, positioned in the top-left, top-right, and bottom-left corners.

Backup Slides

The new road configuration is relatively modest. It eliminates the light on Virginia Ave and Rock Creek Parkway and makes use of extensive but lightly used Highway 66 running below grade through Foggy Bottom



Watergate West

New boat house

New restaurants



We will direct traffic onto Hwy 66 at the two yellow circles and remove the waterfront

The new traffic pattern will take advantage of the lightly used Hwy 66 to move cars below ground better, faster, with less impact on the neighborhood opening up a New River Front Park with a second boat house and room for restaurants. The increased tax revenue from business rent and prosperity would quickly pay for the road work



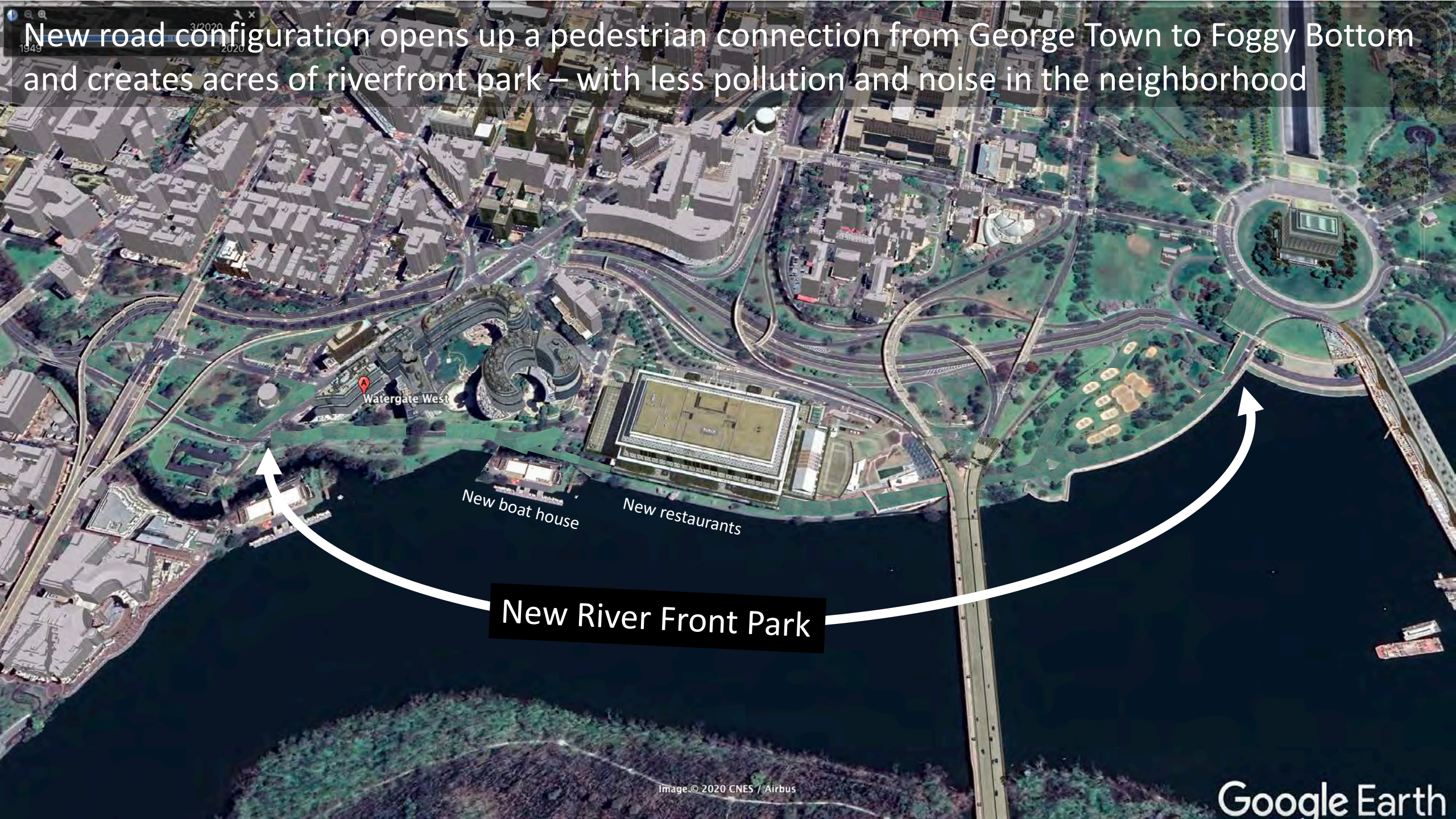
New River Front Park

Watergate West

New boat house

New restaurants

New road configuration opens up a pedestrian connection from George Town to Foggy Bottom and creates acres of riverfront park – with less pollution and noise in the neighborhood

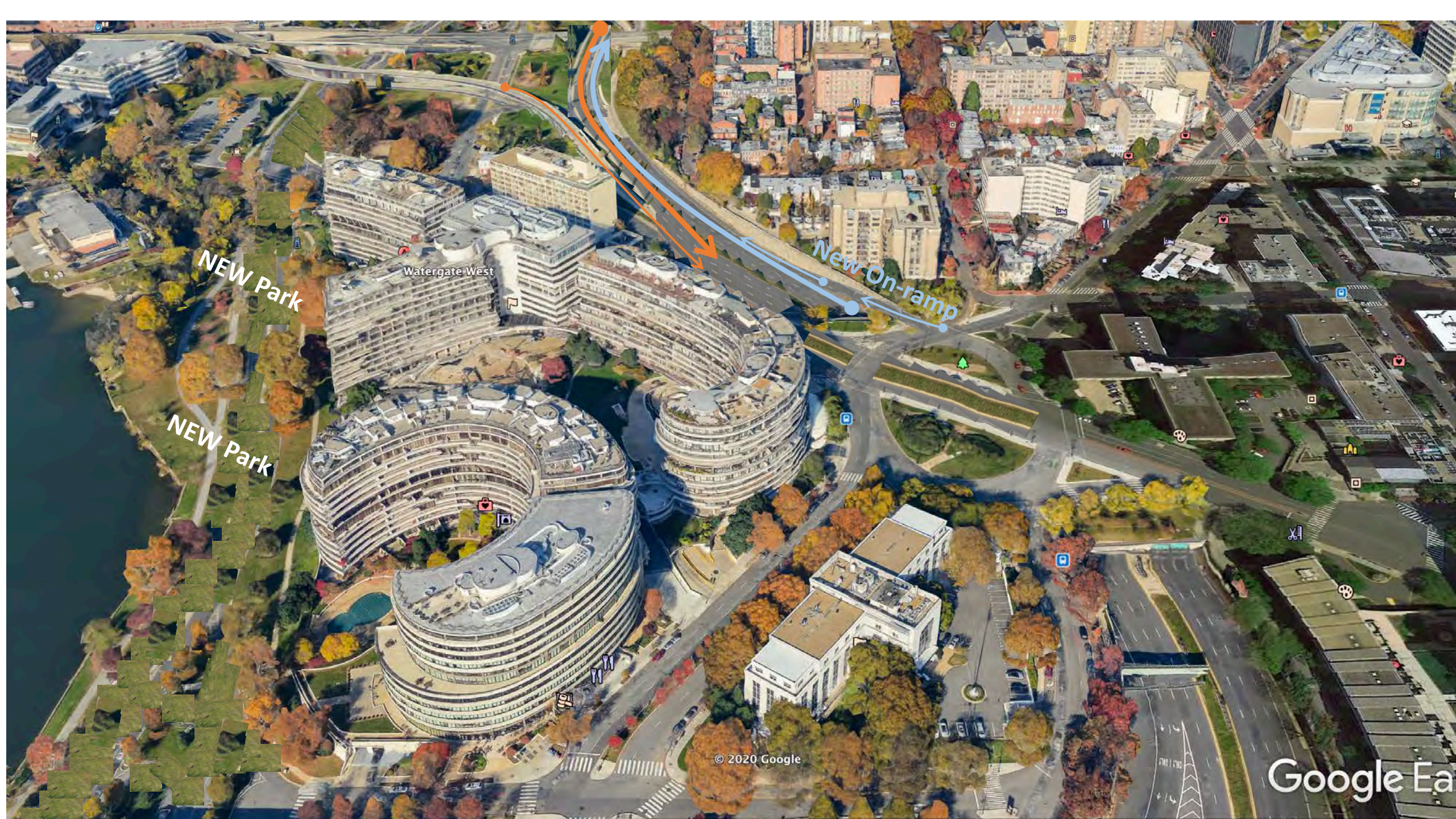


Watergate West

New boat house

New restaurants

New River Front Park



NEW Park

Watergate West

New On-ramp

NEW Park

© 2020 Google

Google Earth