



Virginia Ave NW Protected Bike Lanes

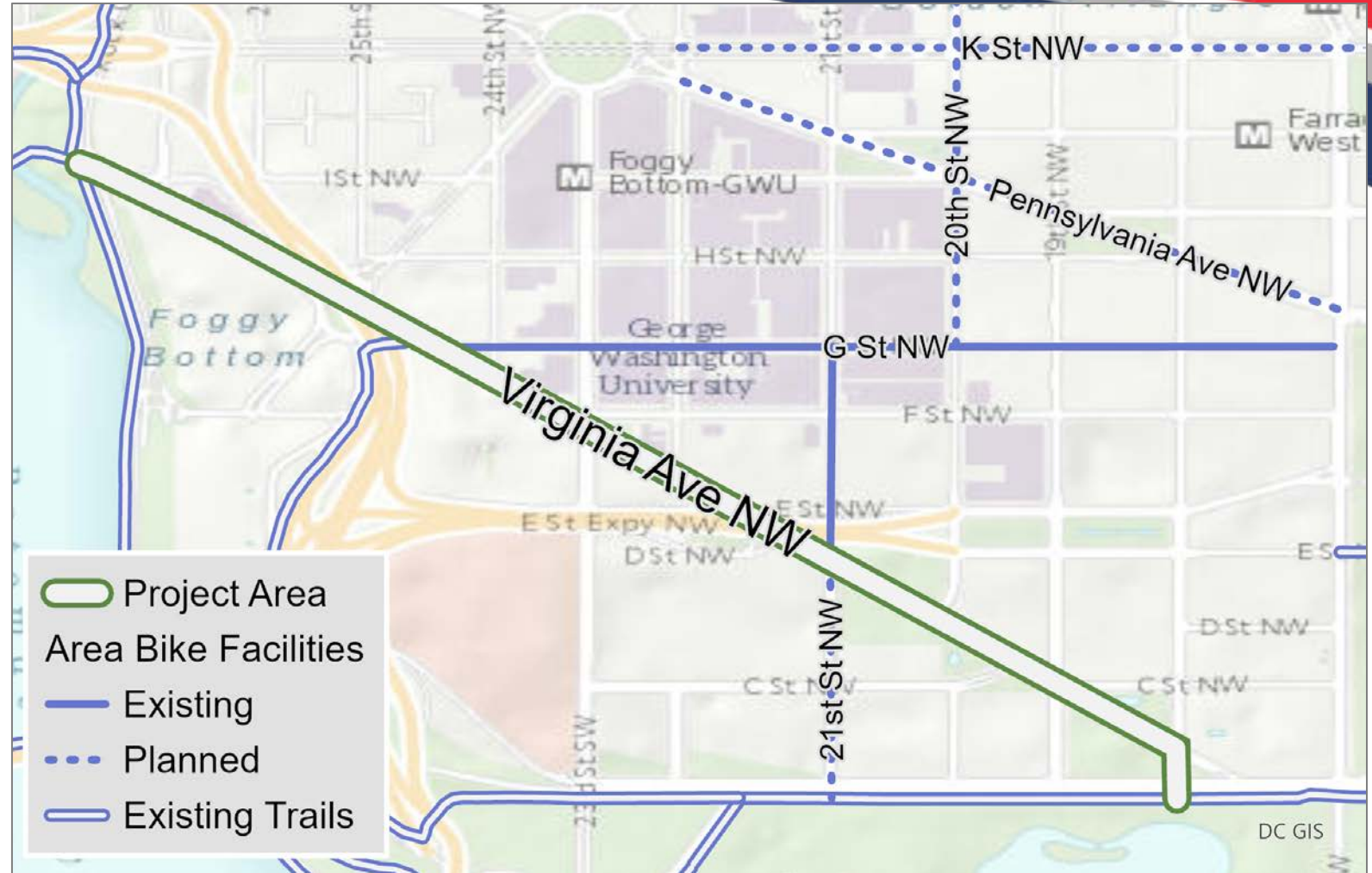
Wednesday, April 21st, 2021

ANC 2A Monthly Meeting

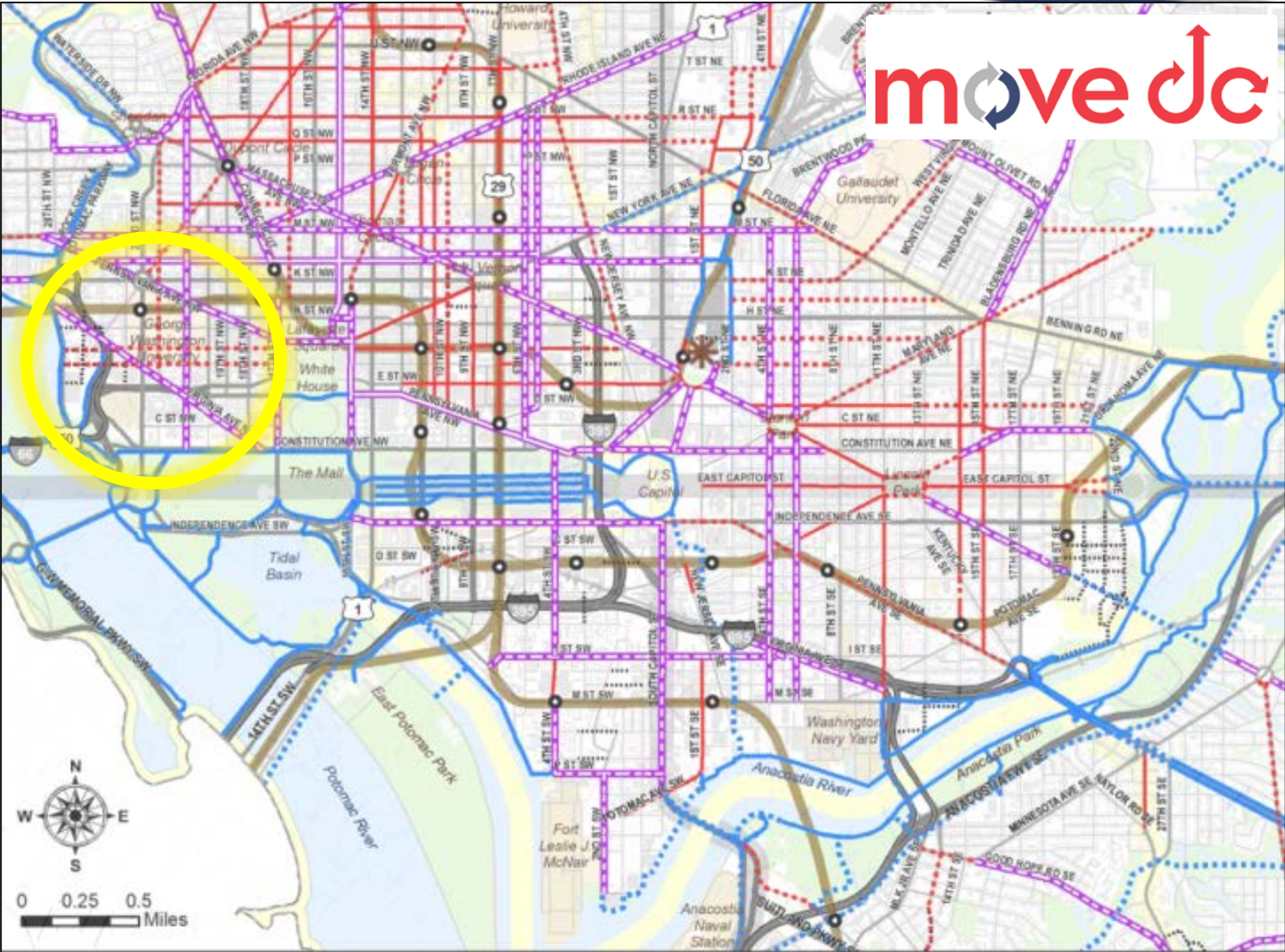
d.

Agenda

- Project Context
- Project Background
- Public Comments
- Design Revisions



Part of a network



move dc

Why Protected Lanes?

Virginia Ave NW
FUTURE



LOW STRESS
TOLERANCE

Virginia Ave NW
TODAY



HIGH STRESS
TOLERANCE

BICYCLIST DESIGN USER PROFILES

**Interested
but Concerned**

51%-56% of the total
population

Often not comfortable with bike lanes, may bike on sidewalks even if bike lanes are provided; prefer off-street or separated bicycle facilities or quiet or traffic-calmed residential roads. May not bike at all if bicycle facilities do not meet needs for perceived comfort.

**Somewhat
Confident**

5-9% of the total
population

Generally prefer more separated facilities, but are comfortable riding in bicycle lanes or on paved shoulders if need be.

**Highly
Confident**

4-7% of the total
population

Comfortable riding with traffic; will use roads without bike lanes.

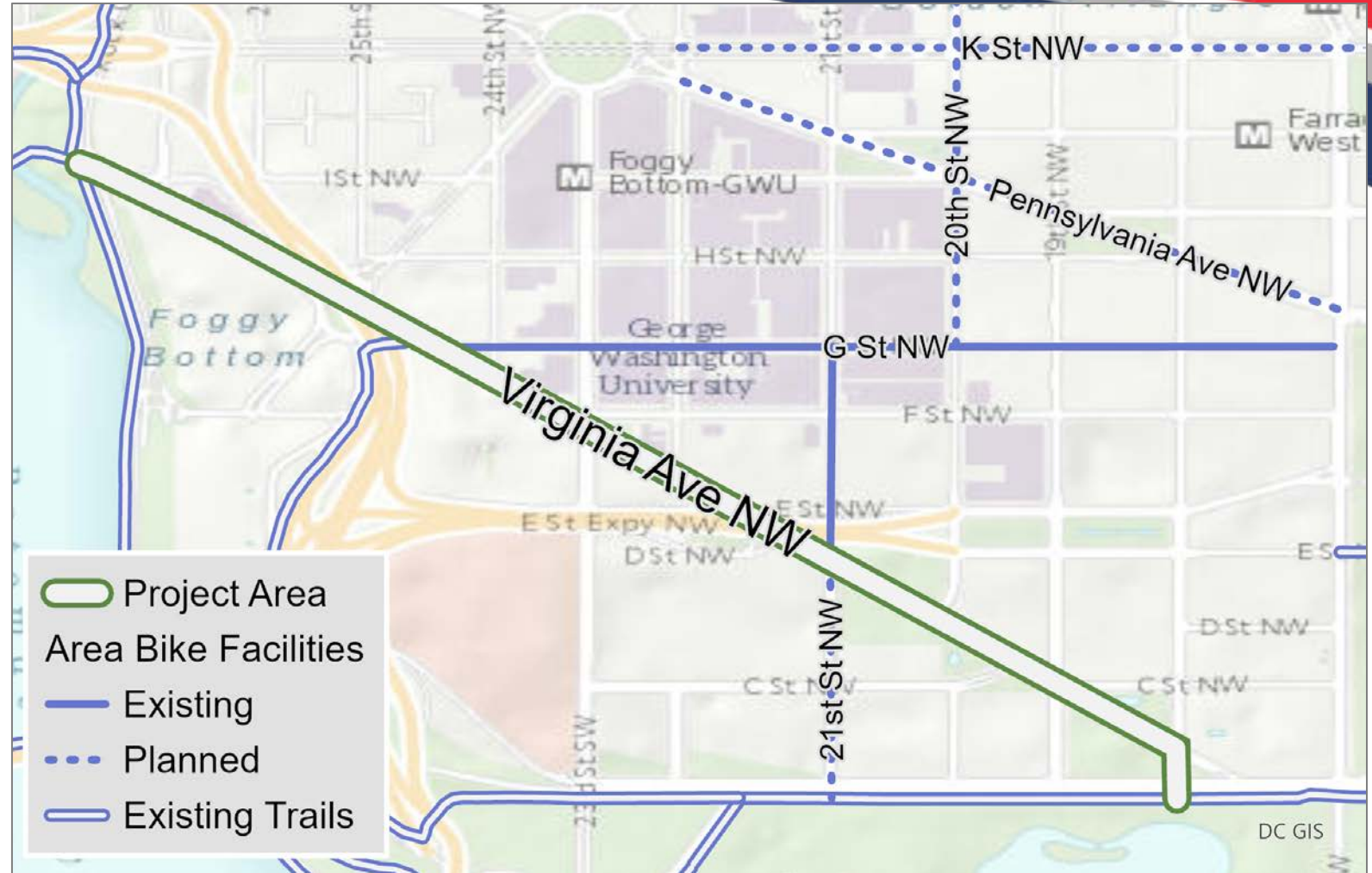


Project Timeline

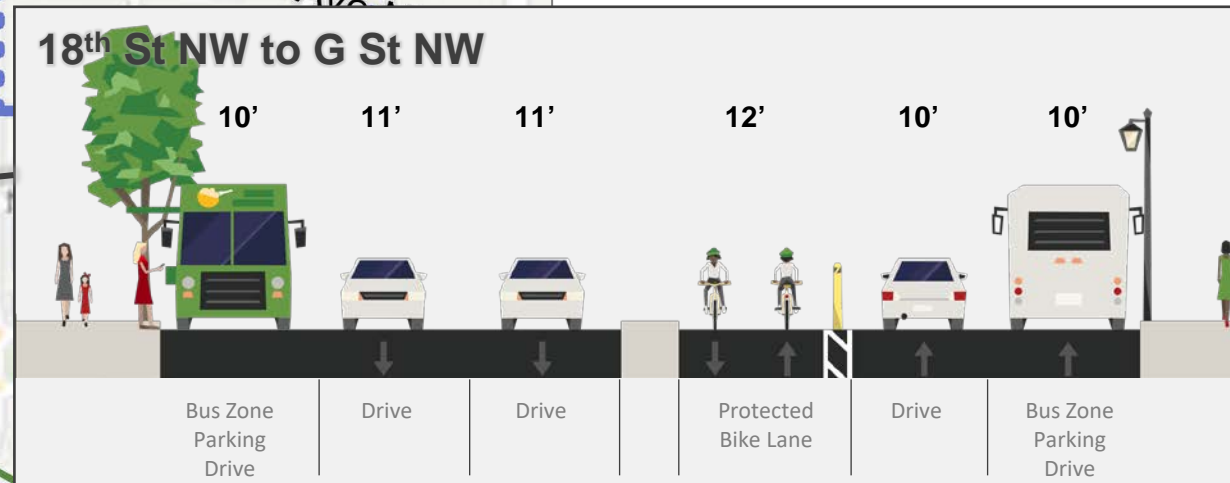
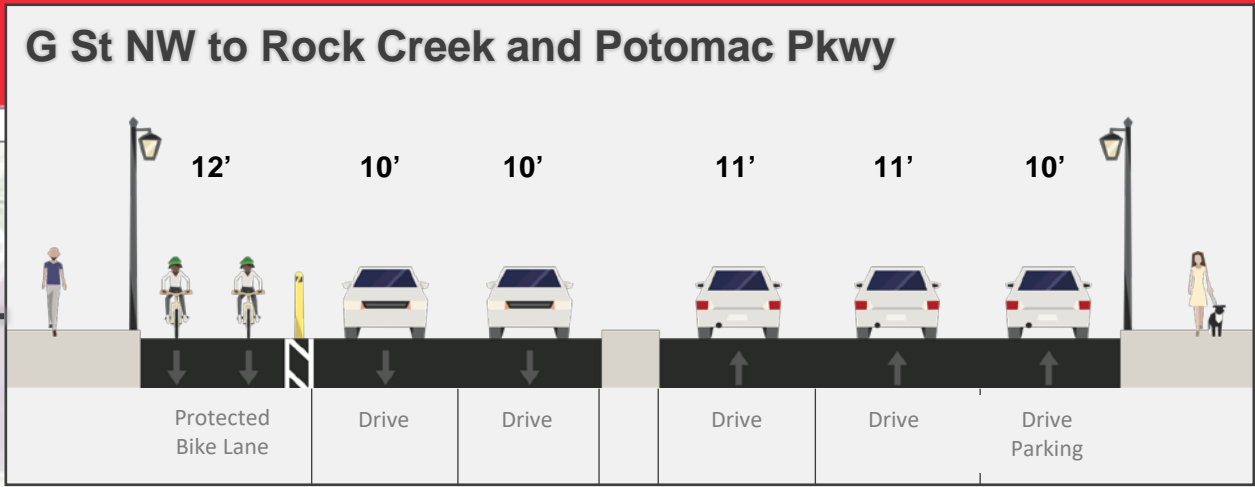
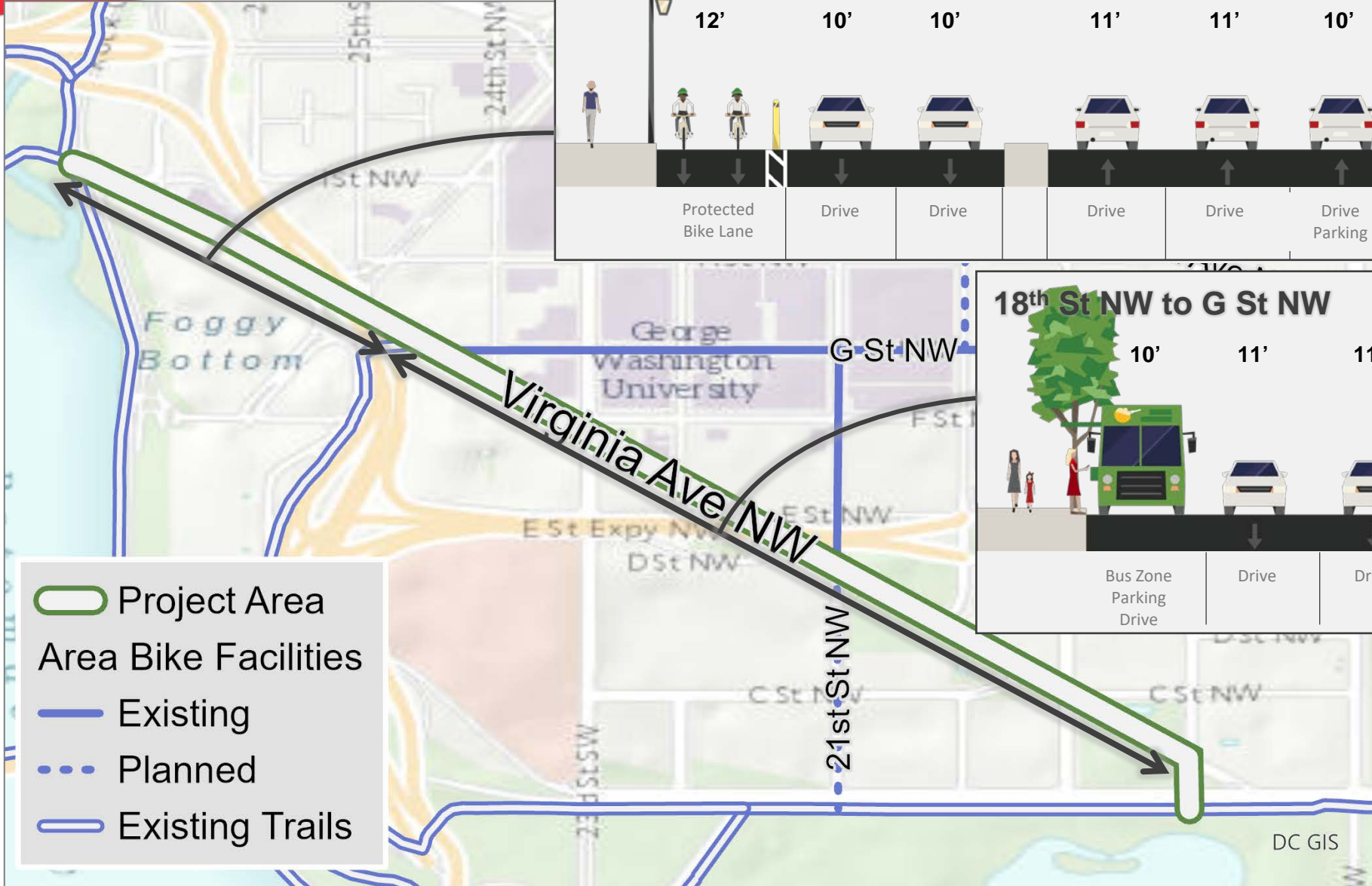


Project Background

- Identified as a useful route by previous plans and people already use it!
- Connects regional trail network, downtown, and National Mall
- Most parts of roadway have excess capacity

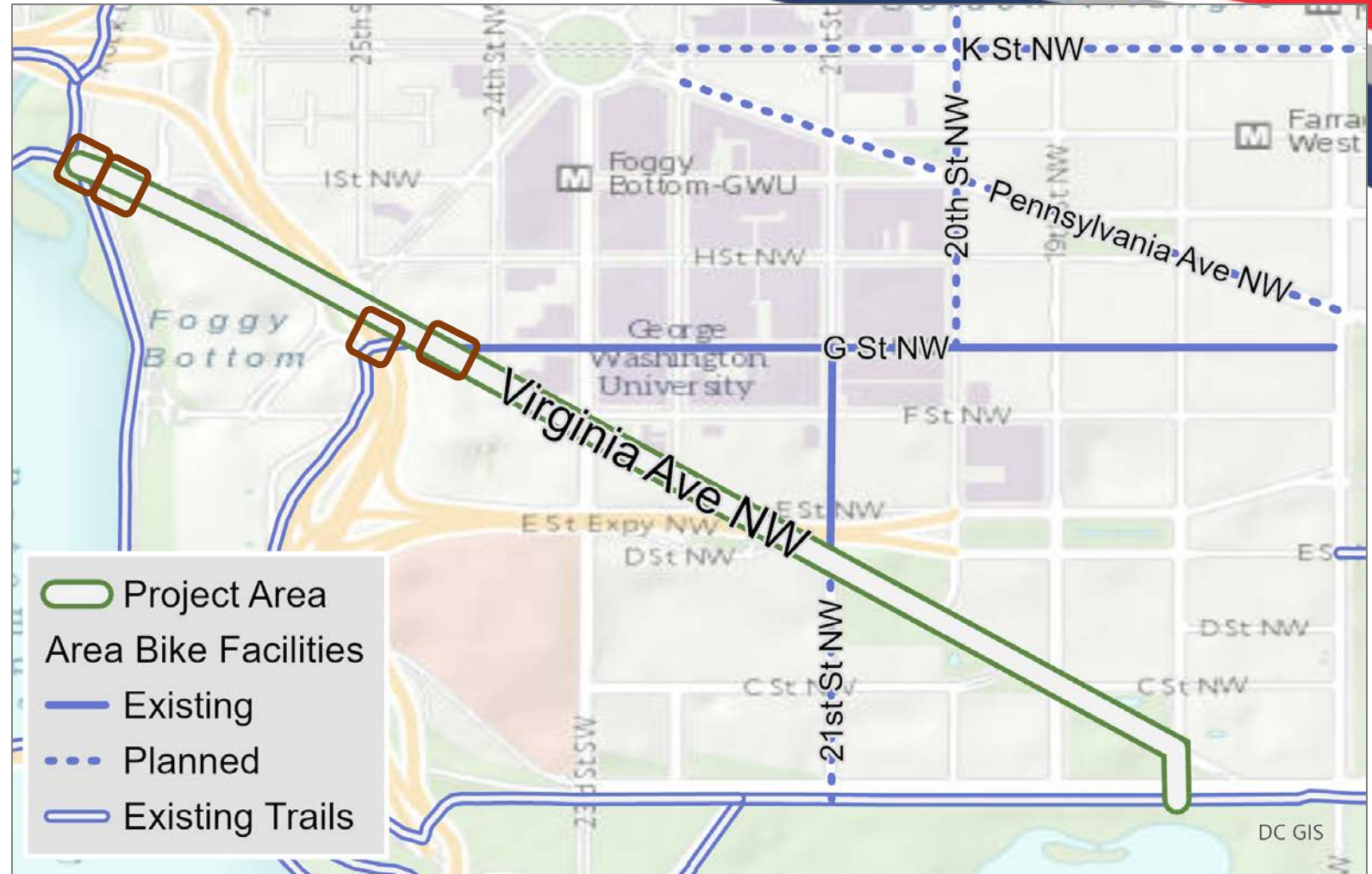


Proposed Layout



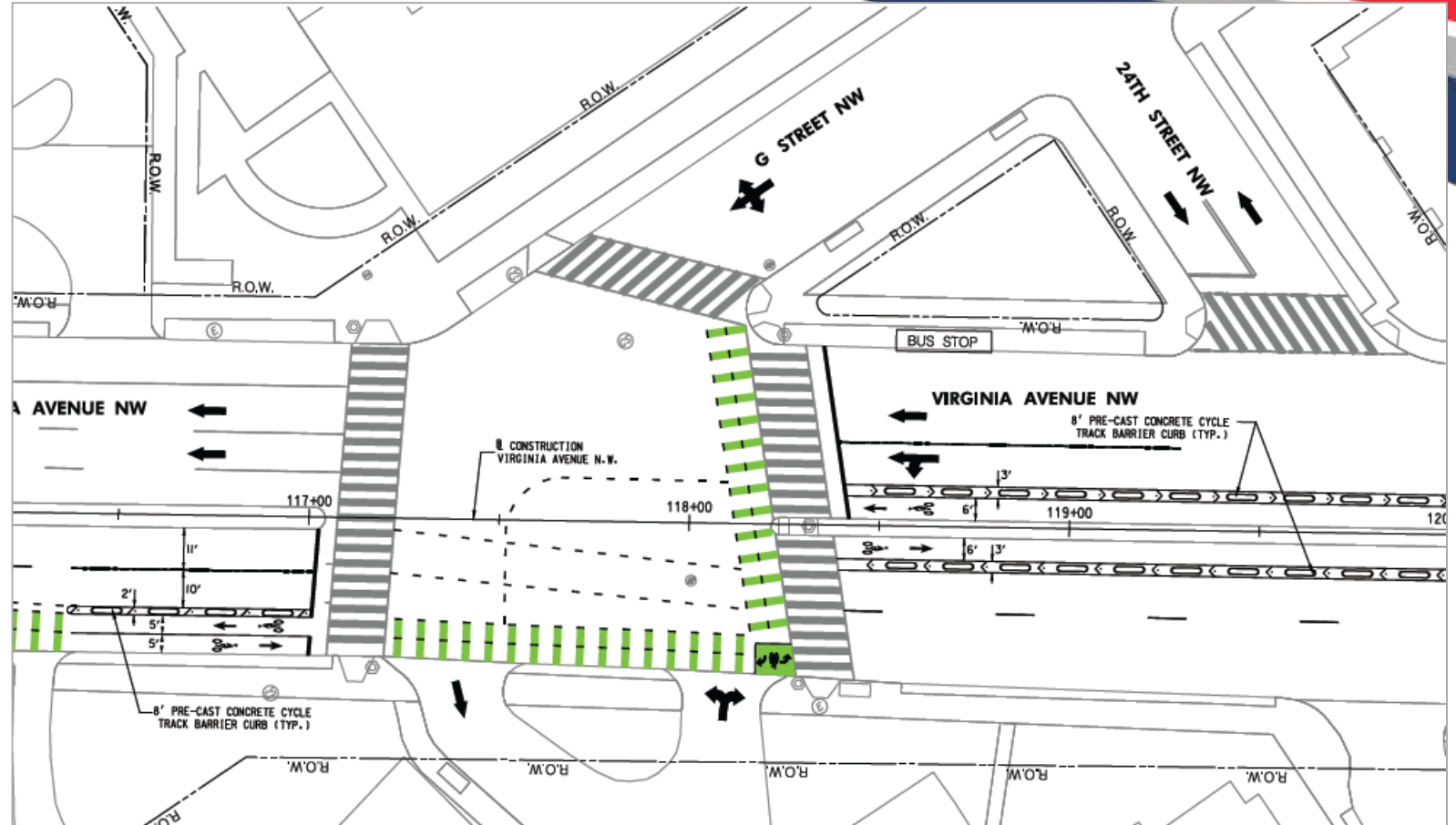
Changes to design

- Separated space for bicyclists and pedestrians at Rock Creek Parkway
- Left turn lane and signal at 27th St NW
- Protected Bike Lane Connection on New Hampshire Ave to I-66/ Theodore Roosevelt Bridge Trail
- Simplified connection with G St NW



Changes to design

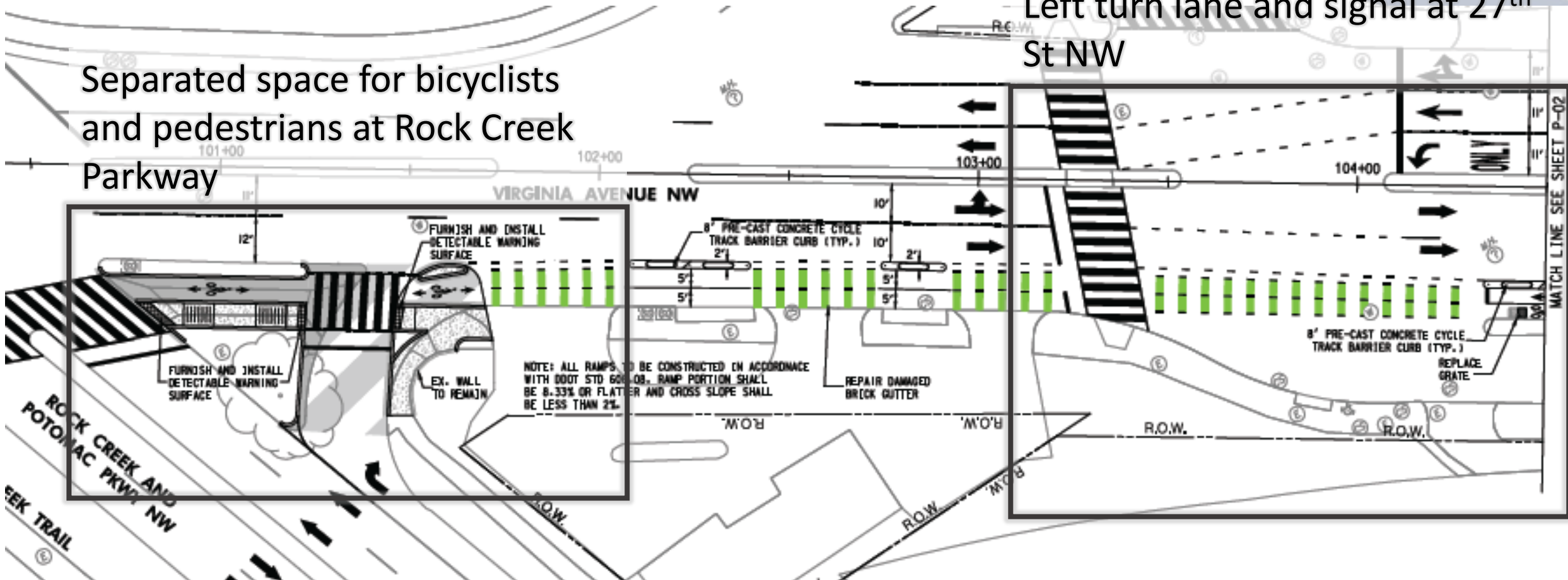
- Simplified connection with G St NW
- Protected Bike Lane Connection on New Hampshire Ave to I-66/ Theodore Roosevelt Bridge Trail



Changes to design

Separated space for bicyclists and pedestrians at Rock Creek Parkway

Left turn lane and signal at 27th St NW



Public Support

- Received 24 public comments including
 - 13 from residents
 - 11 from organizations
- No comments outright oppose project, 7 recommended revisions due to concerns that fall into 3 categories:
 - Traffic delays – Rock Creek and Potomac Pkwy and access to the Kennedy Center during events
 - Safety concerns – Driveway conflicts at the Watergate and interactions between pedestrians and bicyclists
 - Streetscape – Desire for larger plan to beautify Virginia Ave NW

Contact Information

Kevin Harrison

Kevin.Harrison@dc.gov

202-848-8829