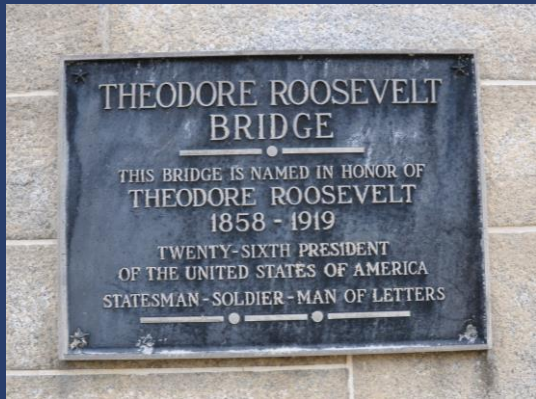




Theodore Roosevelt Bridge Rehabilitation

September 21, 2022

ANC 2A



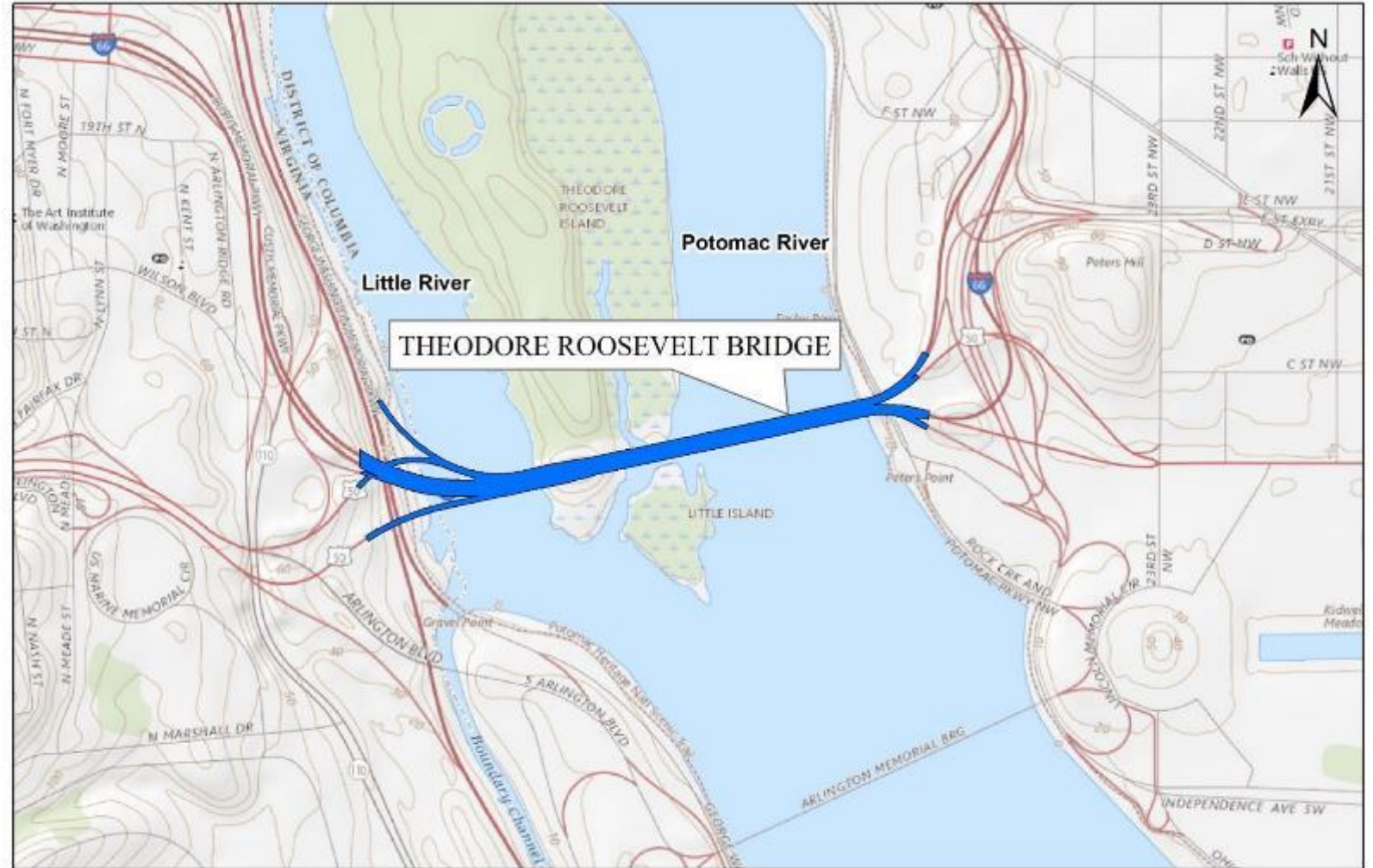
Project Limits / Goals

Project Limits

- Theodore Roosevelt Bridge

Project Goals

- Rehabilitate TR Bridge to extend service life
- Improve multi-modal safety for pedestrians and bicyclists



Project Need

Safety Need

- Functionally obsolete
- Substandard bridge elements

Structurally Needs

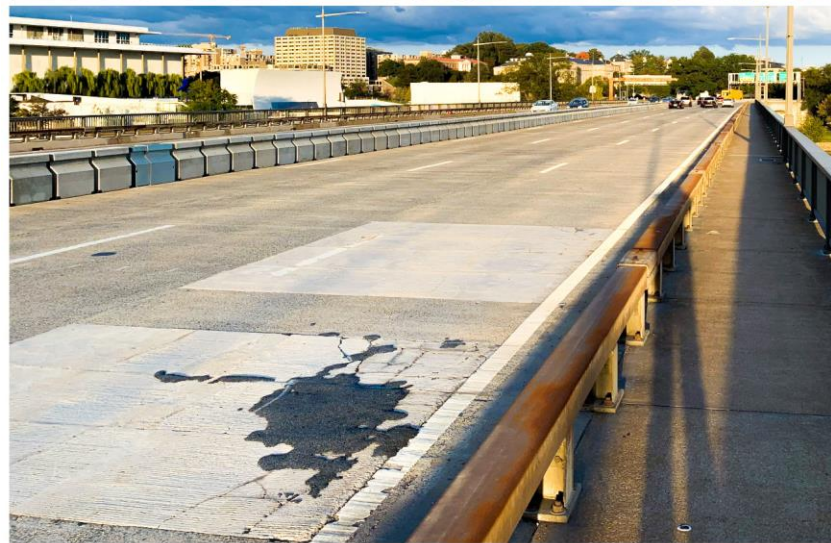
- Deck is deficient
- Steel structure (10-ton weight limit)

Protective Paint

- No longer protects the steel superstructure
- Visually impaired

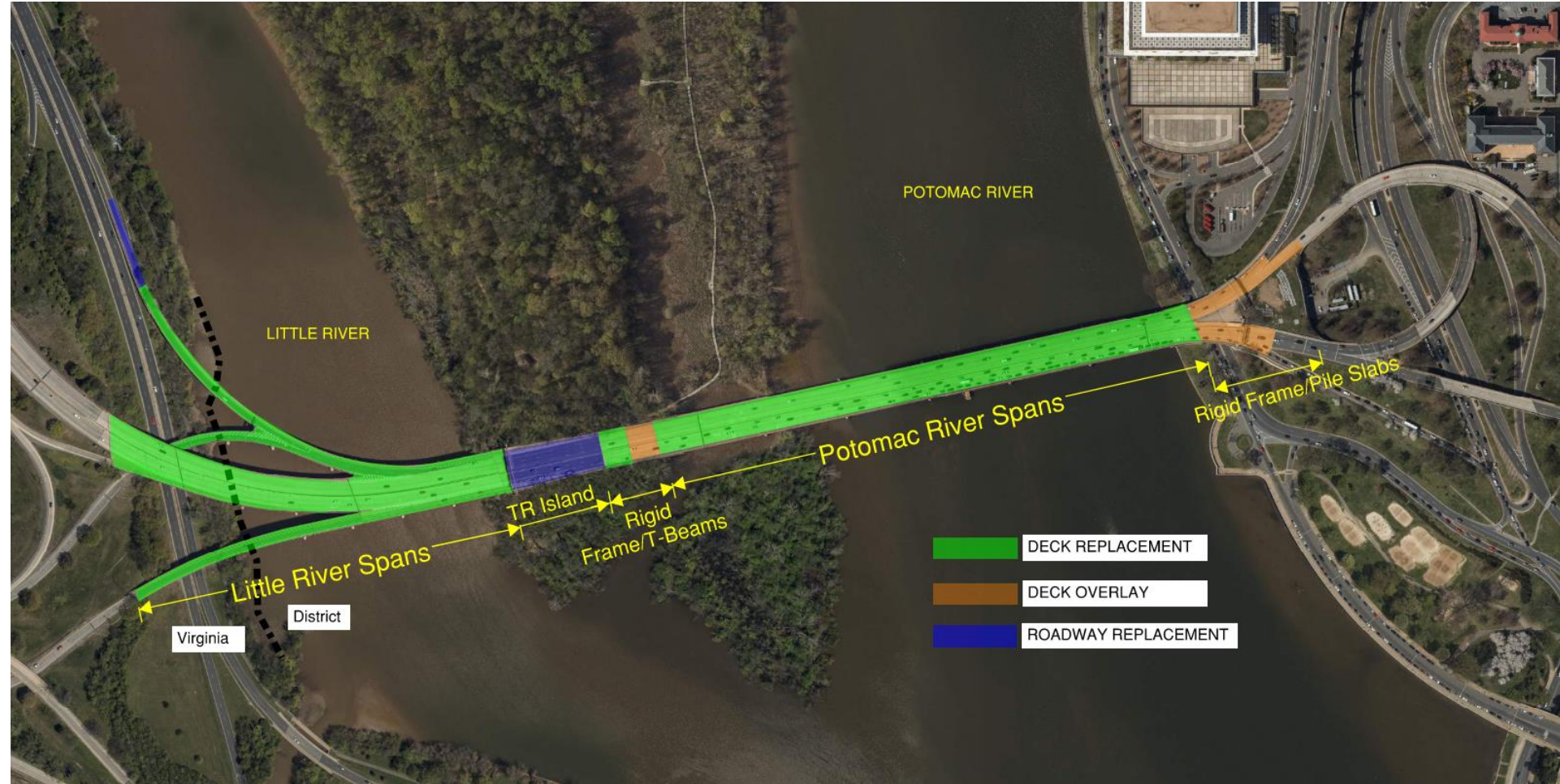
Signage

- Substandard signage



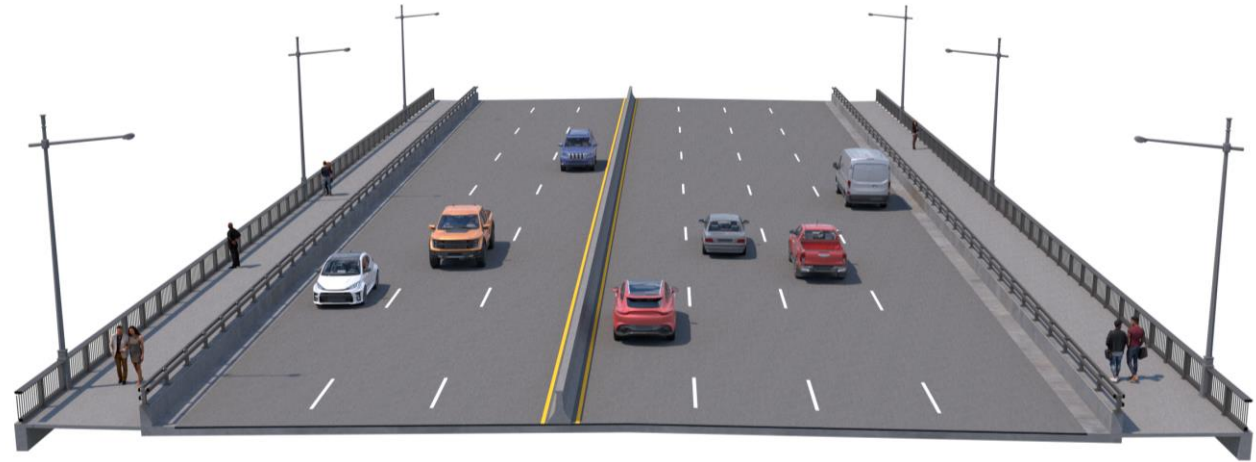
Project Scope

- About 300,000 sqft of new bridge deck
- Deck overlay for approach structures
- Roadway replacement



Project Scope

- Widen sidewalk
 - 10'-0" clear
- 42-inch-tall pedestrian railing
- 42-inch tall traffic barrier
- New roadway lights to match intensity of existing lights
- Relocate sign structures
 - New signage



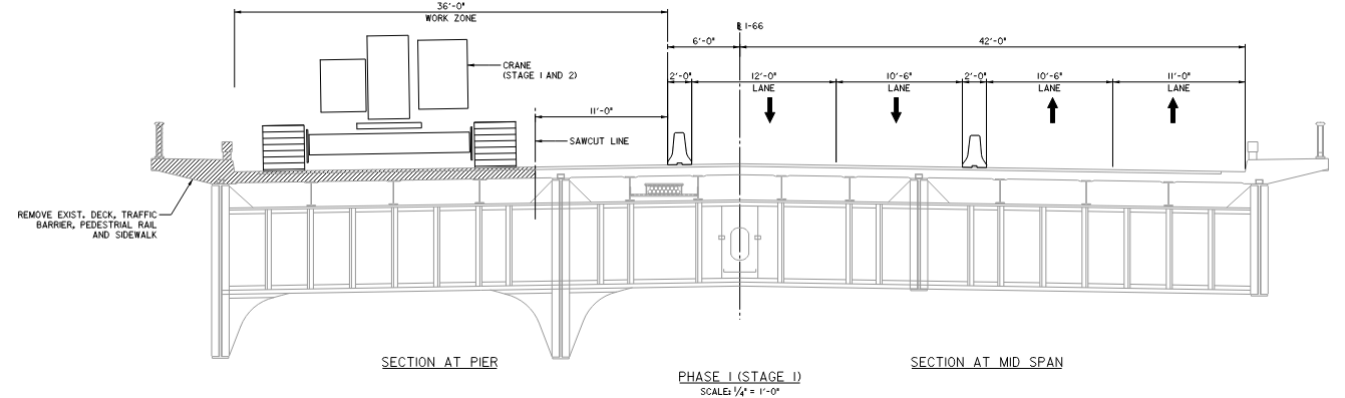
Project Scope

- Paint Bridge
 - Paint to match original color
 - Paint to match existing granite piers
- Substructure Repairs
 - Clean and repair granite



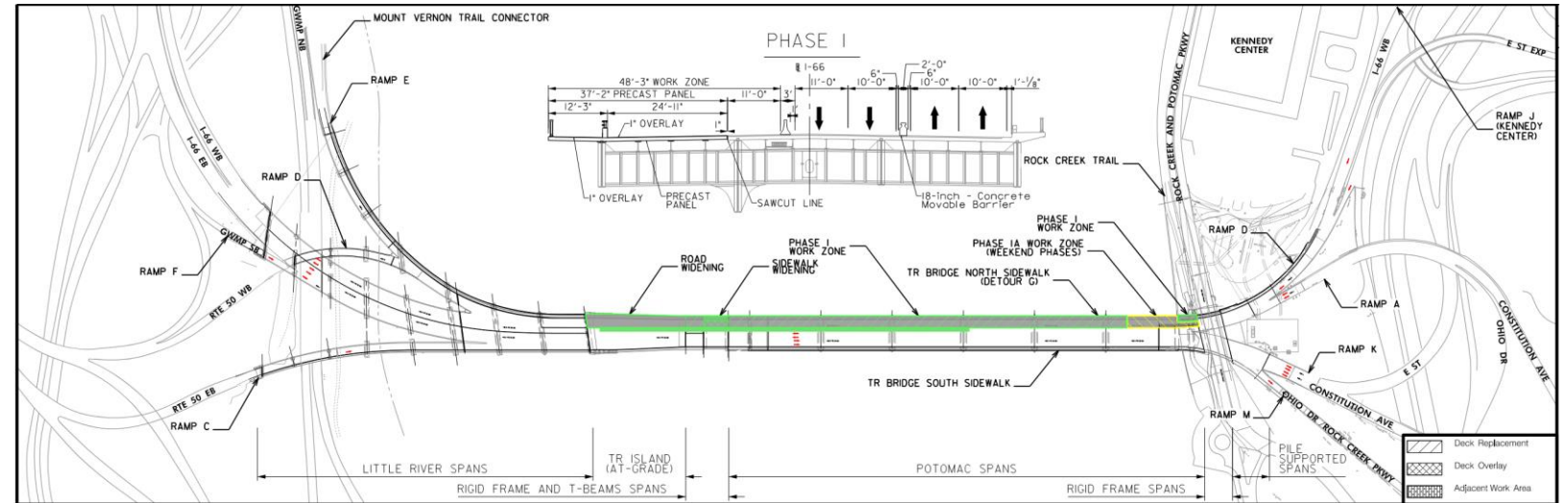
Maintenance of Traffic

- Phase project to minimize traffic impact
- Reduce number of traffic lanes
 - Reduce from 7 -lanes to 4-lanes (2-EB, 2-WB)
- Accelerated Bridge Construction (ABC)
 - Precast deck panels
- Close Virginia ramps for deck replacement
 - Detour traffic via Key or Arlington Memorial Bridge
- Close north sidewalk for deck replacement
 - Detour pedestrian traffic via Key or Arlington Memorial Bridge
- Close south sidewalk for duration of project

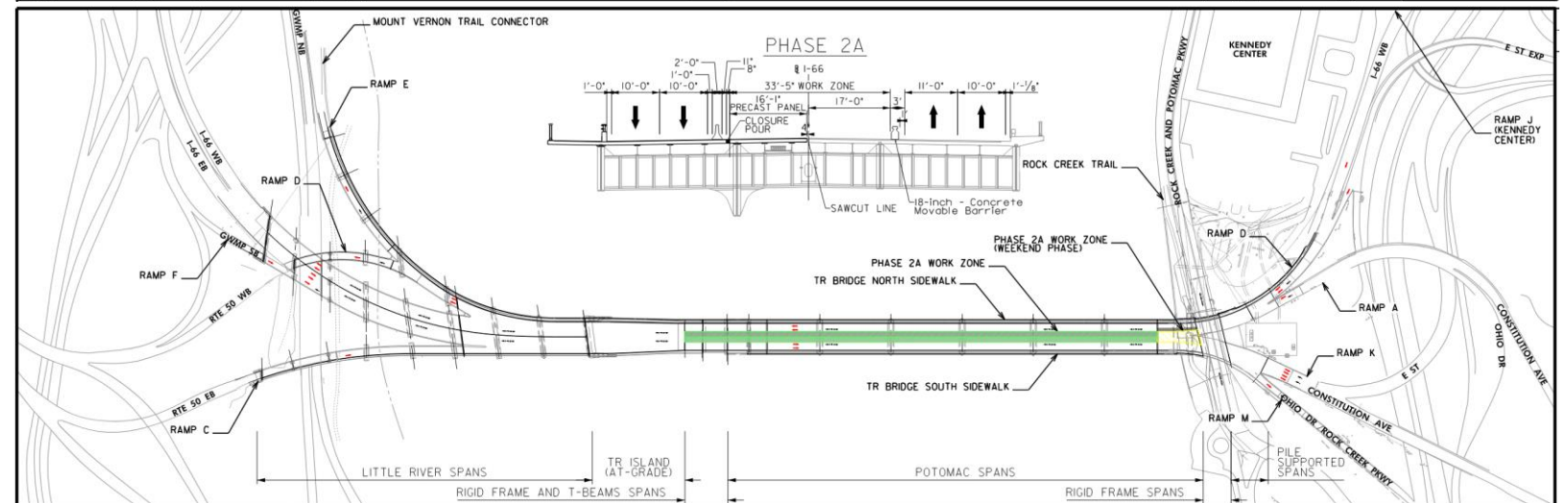


Maintenance of Traffic

- Phase 1
 - Potomac River span north side

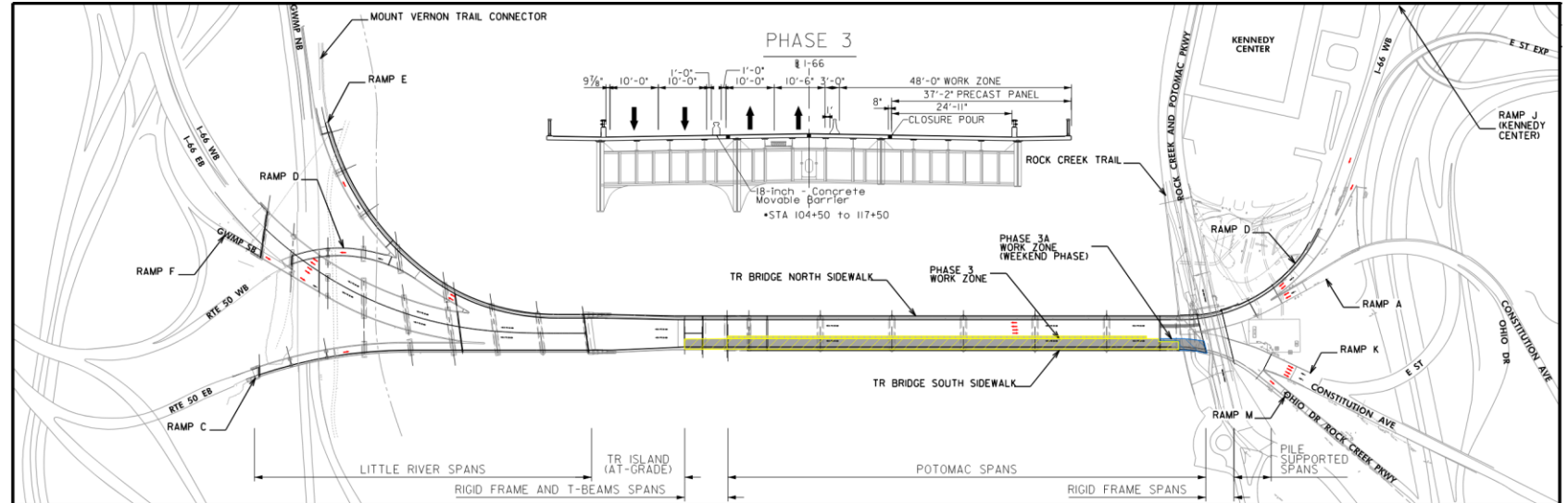


- Phase 2
 - Potomac River span middle

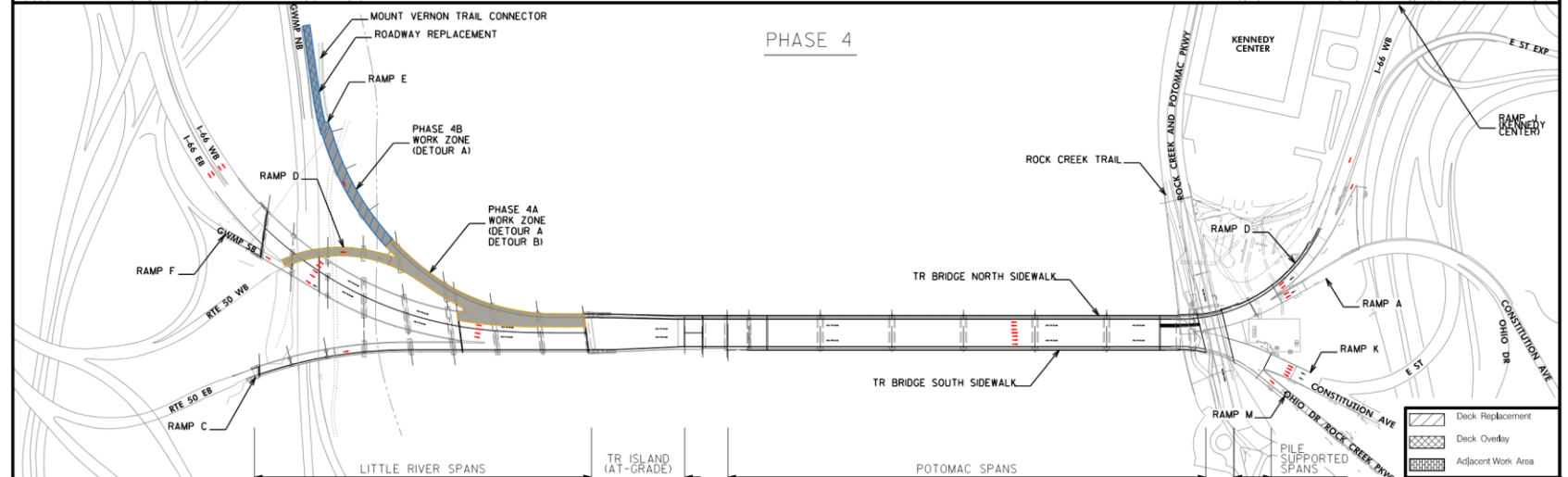


Maintenance of Traffic

- Phase 3
 - Potomac River south side

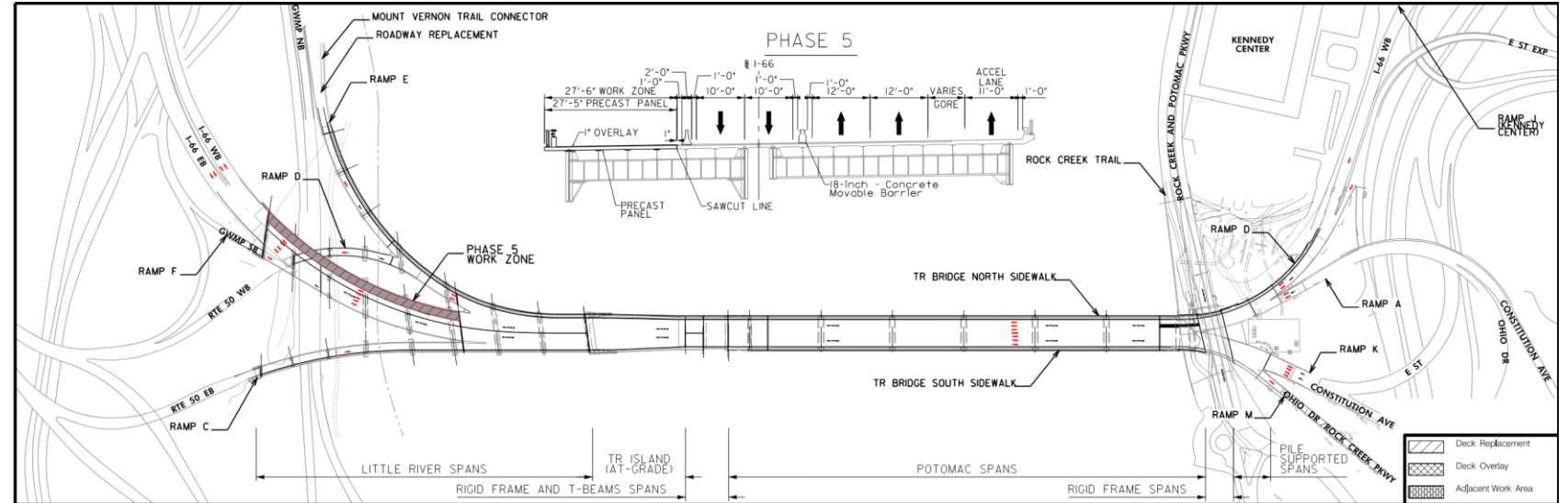


- Phase 4
 - I-66 westbound ramp closures
 - Route 50 WB
 - GWMP NB

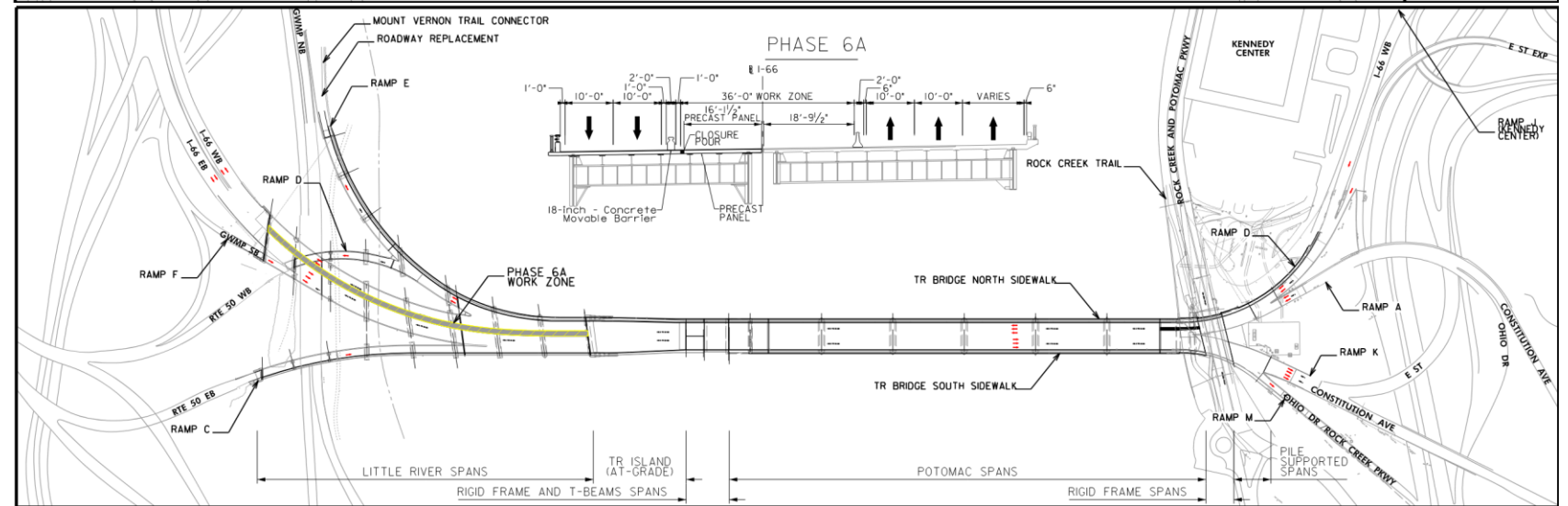


Maintenance of Traffic

- Phase 5
 - Little River I-66 WB



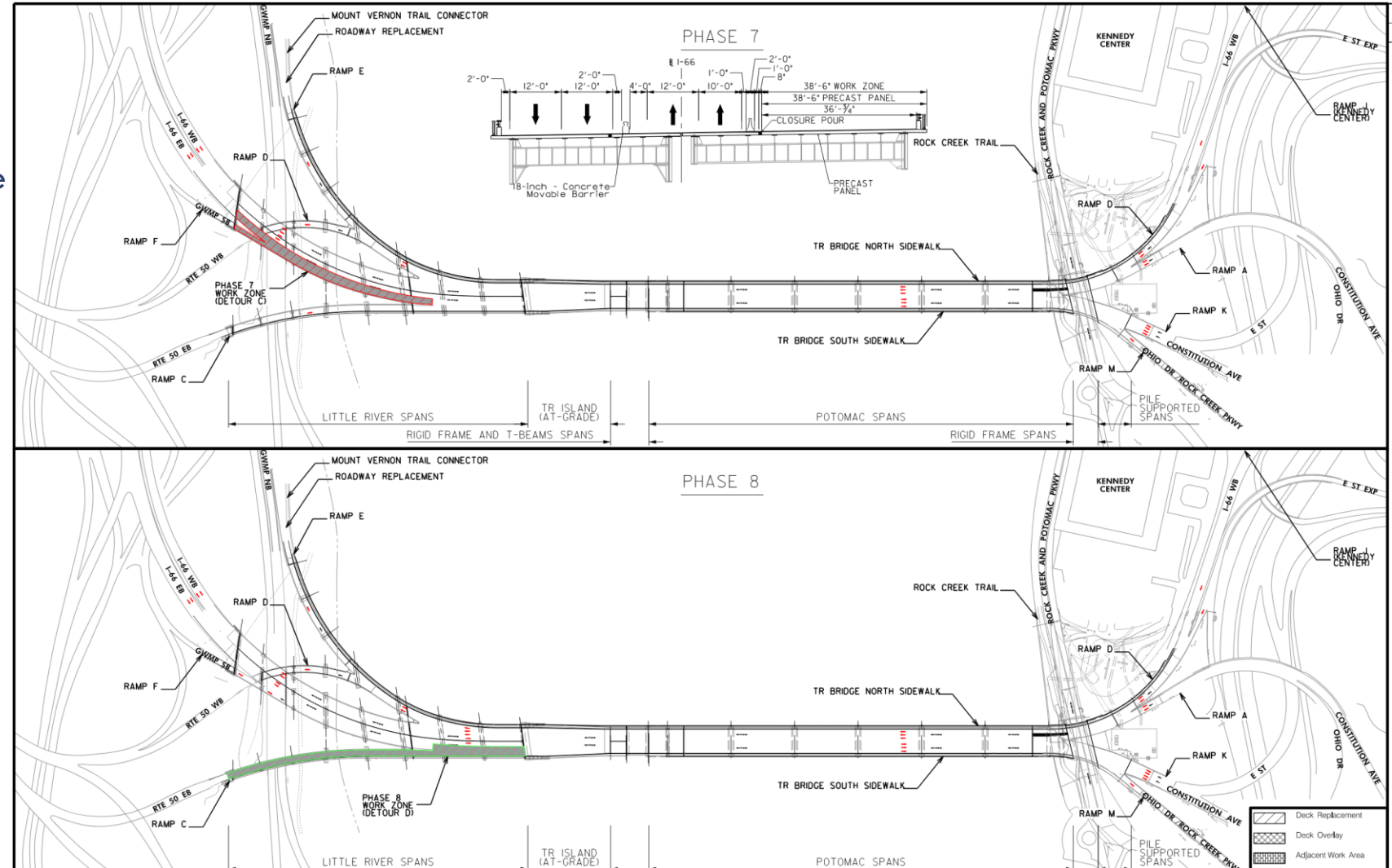
- Phase 6
 - Little River I-66 middle



Maintenance of Traffic

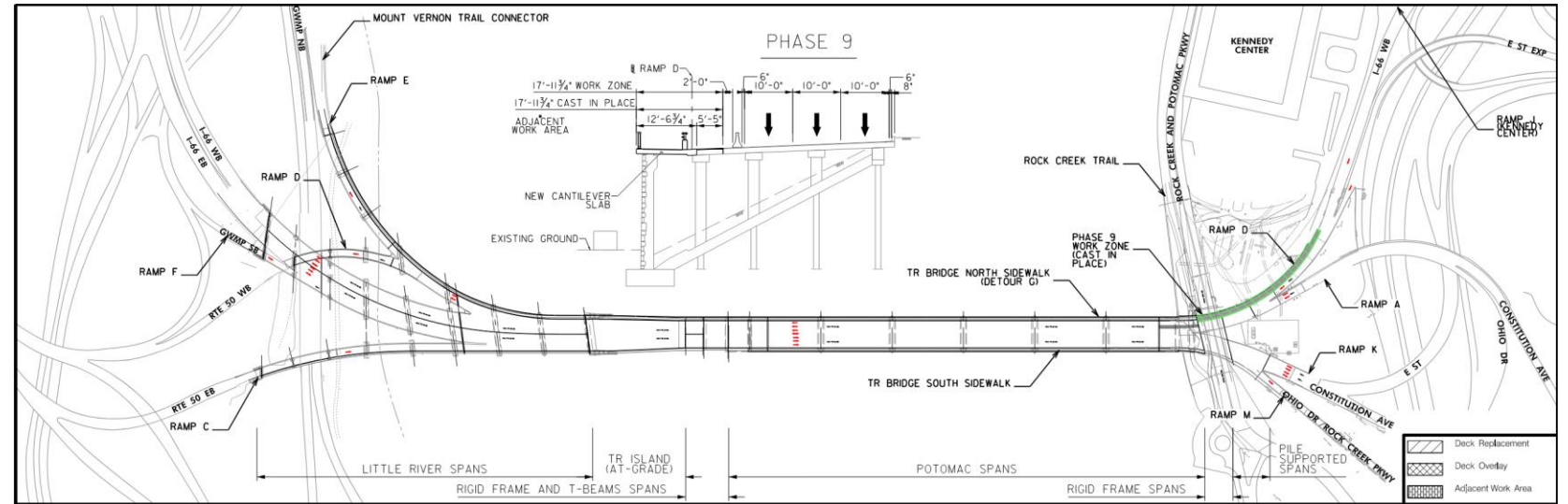
- Phase 7
 - Little River I-66 EB
 - GWMP SB to I-66 EB ramp closure

- Phase 8
 - Route 50 EB to I-66 EB ramp closure



Maintenance of Traffic

- Phase 9
 - Sidewalk widening near Kennedy Center



Project Schedule

- NEPA Categorical Exclusion has been approved by FHWA
- CFA has provided concept approval
- NCPC has provided preliminary review approval

- Advancing final plans
- Anticipated NCPC and CFA final approval Q1 2023
- Advancing permits

Construction Schedule

- Total project duration = **3 - 4 years**
 - Deck Replacement/ Structural Repairs = **2 years**
 - Multiple lane closures
 - 1 year for Potomac span
 - 1 year for Little River span
 - Painting = **9 to 12 months**
 - Single lane closure
- Final Design: **December 2022**
- Anticipated construction start: **Fall/ Winter 2023**



QUESTIONS?

Behrooz Rad, PE – Project Manager: Behrooz.Rad@dc.gov

Huntae Kim, PE – IPMD Team 1 Program Manager: Huntae.Kim@dc.gov

d.

District Department of Transportation